

# The cognitive neuroscience of visual short-term memory

Bradley R Postle

Our understanding of the neural bases of visual short-term memory (STM), the ability to mentally retain information over short periods of time, is being reshaped by two important developments: the application of methods from statistical machine learning, often a variant of multivariate pattern analysis (MVPA), to functional magnetic resonance imaging (fMRI) and electroencephalographic (EEG) data sets; and advances in our understanding of the physiology and functions of neuronal oscillations. One consequence is that many commonly observed physiological ‘signatures’ that have previously been interpreted as directly related to the retention of information in visual STM may require reinterpretation as more general, state-related changes that can accompany cognitive-task performance. Another is important refinements of theoretical models of visual STM.

## Addresses

University of Wisconsin-Madison, Psychology and Psychiatry,  
1202 W. Johnson St., Madison, WI 53706, United States

Corresponding author: Postle, Bradley R ([postle@wisc.edu](mailto:postle@wisc.edu))

Current Opinion in Behavioral Sciences 2015, 1:40–46

This review comes from a themed issue on **Cognitive Neuroscience**

Edited by **Angela Yu** and **Howard Eichenbaum**

doi:[10.1016/j.cobeha.2014.08.004](https://doi.org/10.1016/j.cobeha.2014.08.004)

S2352-1546/© 2014 Elsevier Ltd. All rights reserved.

## Signal intensity-based versus multivariate analyses of fMRI data

### Reconsidering the link between delay-period activity and ‘storage’

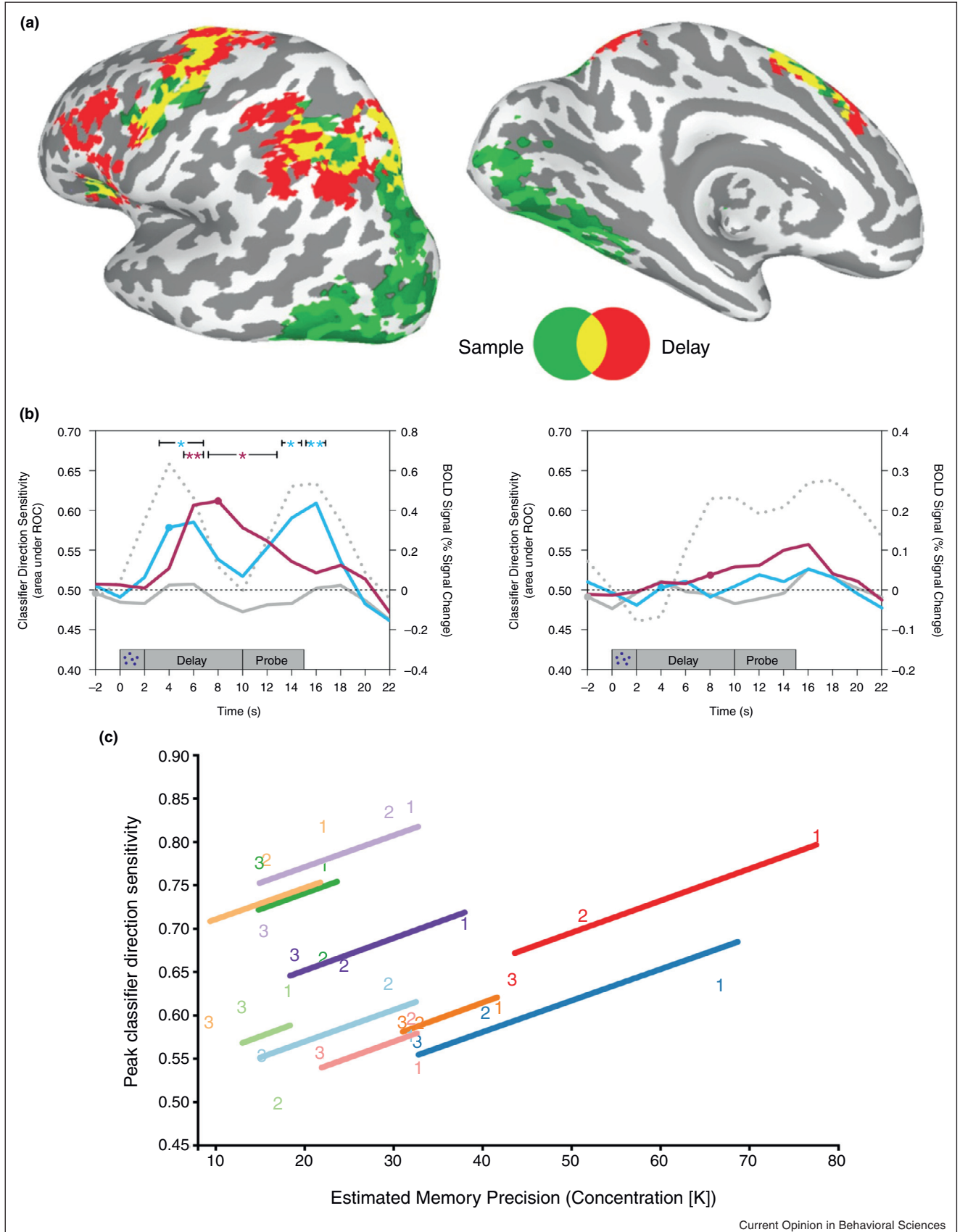
For decades, a governing assumption in STM research has been that the short-term retention of visual information is supported by regions that show elevated levels of activity during the delay period of STM tasks. Thus, for example, debates over the role of the prefrontal cortex (PFC) in STM and the related construct of working memory were framed in terms of whether or not its delay-period activity showed load-sensitivity — systematic variation of signal intensity as a function of memory set size [1–4]. Similarly, patterns of load-sensitive variation of activity in the intraparietal sulcus have been used to test and refine theoretical models about mechanisms underlying capacity limits in visual STM e.g., [5,6]. With the advent of MVPA, however, this signal-intensity assumption has been called into question.

A fundamental difference between MVPA and univariate signal intensity-based analyses is that the former does not entail thresholding the dataset before analysis, but, rather, analyzes the pattern produced by all elements in the sampled space. The analytic advantages to this approach are marked gains in sensitivity and specificity e.g., [7]. In the domain of visual STM, this was first demonstrated with the successful decoding of delay-period stimulus identity from early visual cortex, including V1, despite the absence of above-baseline delay-period activity [8,9]. Subsequently, it was demonstrated that although the short-term retention of specific directions of motion was decodable from medial and lateral occipital regions (despite the absence of elevated delay-period activity), this information was not decodable from regions of intraparietal sulcus and frontal cortex (including PFC) that nonetheless evinced robust elevated delay-period activity [10<sup>\*</sup>]. Further, in these posterior areas the strength of MVPA decoding, a proxy for the fidelity of neural representation, declined with increasing memory load. Importantly, these changes in MVPA decoding predicted load-related declines in behavioral estimates of the precision of visual STM [11<sup>\*\*</sup>] (Figure 1). Relatedly, an fMRI study using a forward encoding-model approach [12<sup>\*</sup>] has demonstrated that interindividual differences in the dispersion (i.e., ‘sharpness’) of multivariate channel tuning functions in areas V1 and V2v predicts recall precision of STM for orientations [13<sup>\*\*</sup>]. Thus, studies [11<sup>\*\*</sup>] and [13<sup>\*\*</sup>] indicate an important link between the fidelity of the distributed neural representation and the fidelity of the mental representation that it is assumed to support.

## The localization of visual STM, and insight into mechanism

It is not the case that intraparietal sulcus and frontal cortex are inherently ‘undecodable’ (see Box 1), nor that they are never recruited for the short-term retention of information. A determinant of whether a network will be engaged in the short-term retention of a particular kind of information is whether it is engaged in the perception or other processing of that information in situations that do not explicitly require STM. Thus, for example, when the short-term retention of abstract visuospatial patterns [23<sup>\*</sup>] or dynamically morphing flow-field stimuli [24] is tested, MVPA reveals delay-period stimulus representation in intraparietal sulcus, in addition to occipital regions; the same is true for face, house, and human-body stimuli in ventral occipitotemporal regions (e.g., [20<sup>\*\*</sup>]). When the to-be-remembered stimulus affords oculomotor planning, its identity can also be decoded from oculomotor-control regions of intraparietal sulcus and of frontal cortex [25<sup>\*\*</sup>].

Figure 1



**Box 1 Population coding in PFC**

PFC shows increases in activity during difficult versus easy conditions of many types of task, not just STM (for which load is an operationalization of difficulty) [14\*]. With regard to STM, MVPA of neuronal activity recorded from monkeys provides hints of what functions may be supported by the elevated activity measured in humans with fMRI. In two studies, MVPA revealed a delay-period transition from an initial representation of properties specific to a stimulus, to one of either the item's status as a 'Go' or 'No-go' cue [15\*\*], or the trial's status as a 'Match' or 'Nonmatch' trial [16\*]. In a test of STM for the color of varying numbers of objects, PFC represented the passage of time across the delay period and the location of to-be-remembered stimuli, but not the colors themselves [17\*\*] (cf [18\*\*]). Consistent with these unit-level findings, MVPA of human fMRI of STM has shown PFC to encode such factors as stimulus category, attentional context, and match-nonmatch status of a trial (e.g., [10\*,19\*\*,20\*\*]). Thus, in addition to its well-established role in the top-down control of neural processing (e.g., [14\*,20\*\*]), another function of PFC may be the processing of information that, although not explicitly being tested, is nonetheless unfolding, and of possible relevance to the organism [17\*\*,21,22].

Indeed, [25\*\*] demonstrated that an MVPA classifier trained on only one condition — attention to a location, planning a saccade to a location, or STM for a location — can decode the other two. This could only be possible if similar patterns of neural activity, implying similar mechanisms, underlie the behaviors that have traditionally been categorized as 'attention' versus 'intention' versus 'retention'.

Patterns of localization can also reflect how the brain supports the strategic recoding of information from the format presented at study into one best suited for the impending memory-guided action. One study first presented subjects with a sample object, then, early in the delay, indicated whether memory for fine-grained perceptual details or for category membership would be tested. For the former, MVPA found evidence for delay-period stimulus representation in inferior occipito-temporal cortex, but not PFC; for the latter, the converse was true [19\*\*]. Combining MVPA with univariate and functional connectivity analyses has revealed a role for frontal cortex and intraparietal sulcus in implementing such strategic shifts of mental coding in visual STM [20\*\*]. MVPA can also track the evolution of mental coding in the absence of instructions, demonstrating, for example, that the verbal recoding of visually presented information also entails the recruitment of a semantic code [26].

**Box 2 Network-level dynamics in STM**

Under conditions for which a stable mental code is assumed (e.g., no instructions to strategically recode [19\*\*,26]), MVPA typically reveals a stable set of regions to represent memoranda across the duration of a delay-period. However, the activity patterns within these regions can be dynamic. For example, with auditory STM, the frequency-specific pattern of elevated stimulus-evoked activity transitions to become a pattern of negative activity during the delay period [30]. For visual STM, a classifier trained on a time point early in the trial will often perform progressively worse as it is slid forward across the remainder of the delay period, the converse being true for a classifier trained on a late-in-the-delay time point and slid backwards (Figure 1b). This suggests a temporal evolution of the neural code underlying the short-term retention of a subjectively 'stable' mental representation [11\*\*,31\*]. It remains to be determined whether these observations from fMRI relate in a meaningful way to the finding of dynamic coding in populations of neurons in monkeys performing tasks requiring sustained attention to an object [32,33].

Neural data also provide important constraints on models of capacity limitations of visual STM [27\*,28\*]. One influential model holds inferior intraparietal sulcus to be important for individuating objects that are to be encoded into visual STM, whereas superior intraparietal sulcus and an area of lateral occipital cortex are responsible for identifying these objects [6]. Recently, however, although the univariate analyses of data from a follow-up experiment [29\*\*] did reproduce many of the findings from the earlier study, MVPA of the same data failed to support a model of segregated circuits performing these two operations. Instead, the study of Naughtin *et al.* [29\*\*] produced two novel findings. First, the contrasts intended to operationalize individuation versus identification recruited primarily overlapping regions, thereby calling into question the dissociability of these two hypothesized mechanisms. Second, many regions outside of the intraparietal sulcus regions emphasized by [6] were also sensitive to these contrasts, suggesting that broadly distributed systems underlie the control of visual STM (Box 2).

**Signal intensity-based versus multivariate analyses of EEG data****Event-related potential (ERP) correlates of STM**

Another neural effect that has influenced models of visual STM capacity limitation is the contralateral delay activity (CDA), an ERP component that scales monotonically with STM load, but asymptotes at the psychophysically estimated capacity of an individual [34]. The

**(Figure 1 Legend)** Dissociating elevated delay-period signal from the short-term retention of information. Summary of results from [11\*\*], in which subjects were scanned with fMRI while viewing one, two, or three sample displays of moving dots, then probed to recall the direction of one. **(a)** Univariate statistical maps indicating regions showing load sensitivity during sample presentation, the delay period, or both. **(b)** Time series data from 'sample-only' voxels (panel on left) or 'delay-only' voxels. Teal waveform illustrates decoding performance of a classifier trained at the time point with the maximal stimulus-evoked response (indicated with dot) then swept across the remainder of the trial. Maroon and solid gray waveforms are the analogous performance of classifiers trained at a time point late in the delay period, or 2 sec before sample onset, respectively. Asterisks indicate better-than-chance decoding at  $p < .05$ (\*) and  $p < .01$ (\*\*). Superimposed is the trial-averaged BOLD activity, depicted in the dotted waveform and aligned with the vertical axis on the right-hand side of the plot. **(c)** Plots of neural precision against behavioral precision. Each color corresponds to an individual subject and each digit (3, 2, or 1) to that individual's neural and behavioral precision at the corresponding memory load. Lines are the fit indicated by ANCOVA ( $r^2 = .35$ ).

CDA is widely interpreted as an index of the short-term retention of information (e.g., [35]), such that, for example, the presence of a CDA during visual search has been taken as evidence for ‘memory in search’ [36,37], and the diminution of the CDA across consecutive trials requiring search for the same target as evidence for the ‘handoff’ of the mnemonic representation of the search template from STM to LTM [38].

Not unlike with univariate analyses of fMRI data, however, there can be problems with equating a 1-D, signal intensity-based measure like the CDA with a single psychological construct (in this case, the short-term retention of information). For example, empirically, the CDA can be observed during tasks for which it is unclear that the short-term retention of information is required, such as during multiple object tracking [39], or during change detection ‘even when the observers know that the objects will not disappear from the visual field’ [40] (p. 8257). Further, the CDA during STM and during visual search is markedly reduced after intensive visual working memory training, despite the fact that STM capacity is increased and search performance improves with training [41<sup>\*</sup>]. Under these conditions, a physiological marker specific to the short-term retention of information would be expected to increase in intensity. An additional challenge to the idea that the CDA is specific to the short-term retention of information comes from the proposal that it may, in fact, be the consequence of averaging across trials containing asymmetric amplitude modulation of alpha-band oscillations [42]. From this perspective, because the CDA is linked to alpha-band oscillations (and, hence, to a general aspect of neurophysiological state, such as cortical excitability or inhibitory tone), the CDA may not index a memory storage mechanism *per se*, but rather a ‘general mechanism for allocation of resources’ [43] (p. 903). Perhaps relatedly, multivariate analyses of alpha-band dynamics have provided important new insights into the neural bases of the short-term retention of visual information.

### Multivariate analysis of EEG in STM

Using a multivariate forward-encoding-model approach similar to [13<sup>\*\*</sup>], Anderson *et al.* [44<sup>\*\*</sup>] constructed channel tuning functions for two narrowly filtered components of the EEG: alpha-band oscillations that were *evoked* by memory-sample onset; and alpha-band oscillations whose amplitude, but not phase, was modulated by sample onset (i.e., *induced*). Their results indicated that spatially distributed patterns in induced—but not evoked—delay period-spanning alpha-band activity predicted both inter-subject and intra-subject variation in precision of STM for line orientation. Note that these results do not necessarily implicate induced alpha-band oscillations in the delay-period representation, *per se*, of stimuli. Alternatively, they may reflect distributed patterns of local inhibition and/or the long-range synchronization of localized representations

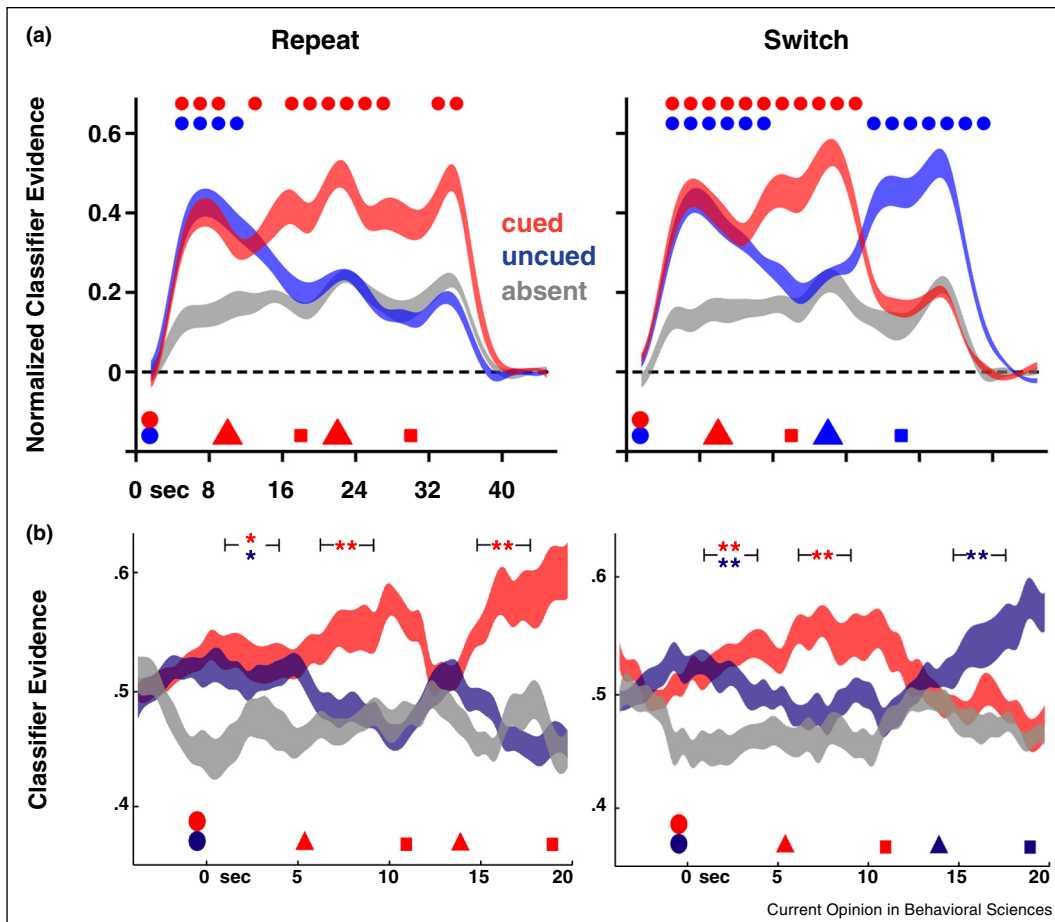
of features, either of which would nonetheless be unique to each stimulus (cf [17<sup>\*\*</sup>]). Although several oscillatory phenomena have been associated with the short-term retention of information (including, e.g., local field potential oscillations at different frequencies, local and distal cross-frequency coupling, phase-amplitude coupling, and long-distance spike-field coherence (reviewed, e.g., in [45<sup>\*</sup>])), their investigation with multivariate methods (e.g., [46]) will be an important step in determining their specificity for stimulus representation versus their possible contributions to other processes engaged by STM tasks.

### Do distributed patterns of activity reflect STM or attention?

The multivariate methods reviewed here draw on two longstanding assumptions about STM. First, that stimulus representation is accomplished by anatomically distributed networks. Second, that the short-term retention of these representations is accomplished via elevated activity in these networks. Most often, however, STM tasks confound the focus of attention with the short-term retention, *per se*, of information. Recent studies have addressed this by first presenting two sample items, then indicating with a delay-period retrocue which of the two will be relevant for the impending memory probe. (Thus, the cue designates an ‘attended memory item’.) Because the first memory probe will be followed by a second delay period, a second retrocue, and a second probe, the item that was not cued during the initial delay (the ‘unattended memory item’) must be retained in STM, because it may be cued as relevant for the second probe. Intriguingly, MVPA of fMRI [47<sup>\*\*</sup>] and EEG [48] variants of this task fail to find evidence for an active neural representation of the unattended memory item, even though its active neural representation is reinstated if it is selected by the second retrocue (Figure 2).<sup>1</sup> These findings provide empirical support for the possibility that elevated activity may correspond more directly to the focus of attention than to the short-term retention of information, *per se*. The short-term retention of information, by this account, may depend on the establishment of representations encoded in distributed patterns of transiently modified synaptic weights, a code that would not be detectable by activity-based measurements. This phenomenon has been observed directly in the PFC of monkeys performing a visual working-memory task [15<sup>\*\*</sup>], and has been simulated in many computational implementations [49<sup>\*</sup>]. It has also been inferred to support the short-term retention of visual information in inferotemporal cortex [50], and so need not be assumed to be a PFC-specific phenomenon. An

<sup>1</sup> Note that, although [47<sup>\*\*</sup>,48] decoded delay-period activity at the category level, and may therefore have lacked the sensitivity to detect the active representation of a single item, this finding has been replicated with item-level MVPA for STM for specific directions of motion, thereby reducing concerns that poor sensitivity may explain failure to find evidence for an active representation of UMIs [LaRocque, Riggall, Emrich, and Postle, unpublished data].

Figure 2



Neural evidence for AMIs versus UMLs versus absent items, on trials when the second retrocue cues the same item as had the first ('Repeat'), or the previously uncued item ('Switch'). Legend labels 'cued' and 'uncued' refer to an item's status relative to the first cue. **(a)** MVPA of fMRI data from [47\*\*]. Circles along timeline denote sample presentation, triangles denote retrocues, and squares denote recognition probes. Circles at top of plots indicate statistical significance of a stimulus category versus the empirical baseline of MVPA evidence for the category that was absent on that trial. MVPA classifiers were trained on data acquired in a prior training session. **(b)** MVPA of EEG data from [48]. Graphical conventions are the same as in A, with the exception that statistical significance (only tested during delay periods) is denoted with color-coded asterisks. MVPA classifiers were trained and tested on the same dataset using hold-one-trial-out cross validation.

important focus of current study is whether there are differences between the neural representation of unattended memory items, which are presumed to passively 'slip out of' the focus of attention versus of items that are intentionally removed from STM [20\*\*,35].

**Conclusion**

High-level cognition, including STM, emerges from dynamic, distributed neural interactions that unfold on multiple time scales. The adoption of methods that more closely align with these principles of brain function is leading to discoveries with important implications for cognitive models of STM and working memory (e.g., [51,52]), and is informing ongoing research into such questions as the factors that underlie capacity limitations of visual STM [27\*,28\*], and the relation between STM and attention (e.g., [53,54]).

**Conflict of interest statement**

I declare that I have no conflict of interest.

**Acknowledgments**

I thank Nathan Rose for helpful comments on this manuscript, and Adam Riggall for help with figures. The author was supported by National Institutes of Health grants MH064498 and MH095984.

**References and recommended reading**

Papers of particular interest, published within the period of review, have been highlighted as:

- of special interest
- of outstanding interest

1. Feredoes E, Postle BR: **Localization of load sensitivity of working memory storage: quantitatively and qualitatively discrepant results yielded by single-subject and group-averaged approaches to fMRI group analysis.** *NeuroImage* 2007, **35**:881-903.

2. Feredoes E, Tononi G, Postle BR: **The neural bases of the short-term storage of verbal information are anatomically variable across individuals.** *J Neurosci* 2007, **27**:11003-11008.
  3. Narayanan N, Prabhakaran V, Bunge SA, Christoff K, Fine EM, Gabrieli JD: **The role of prefrontal cortex in the maintenance of verbal working memory information: an event-related fMRI analysis.** *Neuropsychology* 2005, **19**:223-232.
  4. Leung H-C, Seelig D, Gore JC: **The effect of memory load on cortical activity in the spatial working memory circuit.** *Cogn Affective Behav Neurosci* 2004, **4**:553-563.
  5. Todd JJ, Marois R: **Capacity limit of visual short-term memory in human posterior parietal cortex.** *Nature* 2004, **428**:751-754.
  6. Xu Y, Chun MM: **Dissociable neural mechanisms supporting visual short-term memory for objects.** *Nature* 2006, **440**:91-95.
  7. Lewis-Peacock JA, Postle BR: **Decoding the internal focus of attention.** *Neuropsychologia* 2012, **50**:470-478.
  8. Serences JT, Ester EF, Vogel EK, Awh E: **Stimulus-specific delay activity in human primary visual cortex.** *Psychol Sci* 2009, **20**:207-214.
  9. Harrison SA, Tong F: **Decoding reveals the contents of visual working memory in early visual areas.** *Nature* 2009, **458**:632-635.
  10. Riggall AC, Postle BR: **The relationship between working memory storage and elevated activity as measured with functional magnetic resonance imaging.** *J Neurosci* 2012, **32**:12990-12998.
- The first demonstration with MVPA that elevated delay-period activity may not correspond to stimulus representation *per se*.
11. Emrich SM, Riggall AC, Larocque JJ, Postle BR: **Distributed patterns of activity in sensory cortex reflect the precision of multiple items maintained in visual short-term memory.** *J Neurosci* 2013, **33**:6516-6523.
- This study both failed to find MVPA evidence for stimulus representation in frontal and parietal regions showing load-sensitive delay-period activity, and demonstrated that the fidelity of the neural representation in extrastriate cortex predicts the behavioral precision of STM.
12. Serences JT, Saproo S: **Computational advances towards linking BOLD and behavior.** *Neuropsychologia* 2012, **50**:435-446.
- A cogent, accessible tutorial introduction of principles underlying multivariate encoding models, and their potential for understanding brain-behavior links.
13. Ester EF, Anderson DE, Serences JT, Awh E: **A neural measure of precision in visual working memory.** *J Cogn Neurosci* 2013, **25**:754-761.
- Provides strong evidence for a sensory recruitment model of visual STM by confirming, with multivariate encoding models, the hypothesis that 'the relative 'quality' of [multivariate] patterns [of activity in visual cortex] should determine the clarity of an individual's memory.' (p. 754).
14. Duncan J: **The structure of cognition: attentional episodes in mind and brain.** *Neuron* 2013, **80**:35-50.
- Extensive review of evidence from human neuroimaging and neuropsychology, and from monkey electrophysiology, in support of theory that regions of PFC and intraparietal sulcus are key nodes in a 'multiple demand' network that underlies many aspects of cognitive control.
15. Stokes MG, Kusunoki M, Sigala N, Nili H, Gaffan D, Duncan J: **Dynamic coding for cognitive control in prefrontal cortex.** *Neuron* 2013, **78**:364-375.
- Population-level MVPA reveals that PFC transitions through several high-dimensional states during a working memory trial, across which an initial stimulus representation is superceded by representations of trial context and behavioral choice. This high-dimensional trajectory may be supported by 'hidden states' of patterned change in networks of synapses, rather than as states that are 'explicitly' manifest in firing rates.
16. Meyers EM, Qi XL, Constantinidis C: **Incorporation of new information into prefrontal cortical activity after learning working memory tasks.** *Proc Natl Acad Sci U S A* 2012, **109**:4651-4656.
- With analyses and conclusions broadly consistent with [15\*\*], these authors also emphasize the dynamic nature of the distributed patterns of activity in PFC, noting, for example, that 'task-relevant information in several neurons was present for only short periods of time relative to the duration of the . . . delay period . . . [and so] consequently the absolute firing rate level of a single neuron at a particular time point is often highly ambiguous if the context of the larger population is not taken into account' (p. 4652).
17. Lara AH, Wallis JD: **Executive control processes underlying multi-item working memory.** *Nature Neurosci* 2014, **17**:876-883.
- Multivariate analyses of population-level activity in PFC reveal the delay-period representation of factors that, although not explicitly required by the task, are presumably nonetheless experienced by the monkey. Additionally, findings from local field potentials (LFPs) may help relate intracranial electrophysiology to extracranial measures like the CDA [55].
18. Mendoza D, Torres S, Martinez-Trujillo J: **Sharp emergence of feature-selective sustained activity along the dorsal visual pathway.** *Nat Neurosci*, in press.
- Neuronal recordings show population-level delay-period stimulus representation (direction of motion) in spiking patterns in motion-sensitive visual region MST and in PFC, and in a broad-band range of the local field potential (LFP) in area MT, plus significant spike-field coherence between PFC and the beta-band range of the LFP in MT. This highlights important questions about interregional dynamics, and interregional differences in stimulus coding that must also be addressed in future studies of human STM.
19. Lee SH, Kravitz DJ, Baker CI: **Goal-dependent dissociation of visual and prefrontal cortices during working memory.** *Nat Neurosci* 2013, **16**:997-999.
- Demonstrated that the neural systems that represent a stimulus in STM vary depending on the informational format required by the task. Thus, in the human, as with the monkey [33], category membership is represented in different neural systems than is perceptual detail.
20. Nelissen N, Stokes M, Nobre AC, Rushworth MF: **Frontal and parietal cortical interactions with distributed visual representations during selective attention and action selection.** *J Neurosci* 2013, **33**:16443-16458.
- Systematic MVPA of stimulus representation in occipitotemporal regions when item is being perceived, versus when it is in STM with varying levels of attentional status. Additionally, the supplementation with univariate and functional-connectivity analyses illustrates how PFC and parietal regions interact with distributed occipitotemporal stimulus representations.
21. Tsujimoto S, Postle BR: **The prefrontal cortex and delay tasks: a reconsideration of the "mnemonic scotoma".** *J Cogn Neurosci* 2012, **24**:627-635.
  22. Genovesio A, Tsujimoto S, Navarra G, Falcone R, Wise SP: **Autonomous encoding of irrelevant goals and outcomes by prefrontal cortex neurons.** *J Neurosci* 2014, **34**:1970-1978.
  23. Christophel TB, Hebart MN, Haynes JD: **Decoding the contents of visual short-term memory from human visual and parietal cortex.** *J Neurosci* 2012, **32**:12983-12989.
- Together with [10\*], the first MPVA study to report the failure to identify delay-period stimulus representation in PFC.
24. Christophel TB, Haynes JD: **Decoding complex flow-field patterns in visual working memory.** *Neuroimage* 2014, **91**:43-51.
  25. Jerde T, Merriam EP, Riggall AC, Hedges JH, Curtis CE: **Prioritized maps of space in human frontoparietal cortex.** *J Neurosci* 2012, **32**:17382-17390.
- By demonstrating that an MVPA classifier trained on only one condition — attention to, saccade planning for, or STM for, a location — can decode the other two, this study provided definitive evidence for sensorimotor recruitment models of visual STM.
26. Lewis-Peacock JA, Drysdale A, Postle BR: **Neural evidence for the flexible control of mental representations.** *Cerebral Cortex*, in press.
  27. Luck SJ, Vogel EK: **Visual working memory capacity: from psychophysics and neurobiology to individual differences.** *Trends Cogn Sci* 2013, **17**:391-400.
- Recent articulation of the 'slots' model, whereby visual STM capacity limitations arise from a structural limit to the number of discrete visual object representations that can be actively maintained simultaneously.
28. Ma WJ, Husain M, Bays PM: **Changing concepts of working memory.** *Nat Neurosci* 2014, **17**:347-356.
- Summary of recent evidence in support of 'shared resource' models that, in contrast to slots models, account for visual STM capacity limitations as resulting from the depletion of a single resource 'shared' by multiple items for their active representation.

29. Naughtin CK, Mattingley JB, Dux PE: **Distributed and overlapping neural bases for object individuation and identification.** *Cerebral Cortex*, in press.  
Clear illustration, via head-to-head comparison of univariate versus MVPA analyses of an fMRI dataset, of how the former are inherently biased toward producing results that support localizationist models, whereas the latter can reveal that the functions in question are supported by more broadly distributed, and likely less 'functionally specific', networks.
30. Linke AC, Vicente-Grabovetsky A, Mitchell DJ, Cusack R: **Encoding strategy accounts for individual differences in change detection measures of VSTM.** *Neuropsychologia* 2011, **49**:1476-1486.
31. Sreenivasan K, Vytlačil J, D'Esposito M: **Distributed and dynamic storage of working memory stimulus information in extrastriate cortex.** *J Cogn Neurosci* 2014, **26**:1141-1153.  
Together with [11\*\*], illustrates the delay-period transition in the multivariate pattern of fMRI data representing the to-be-remembered stimulus information.
32. Crowe DA, Averbeck BB, Chafee MV: **Rapid sequences of population activity patterns dynamically encode task-critical spatial information in parietal cortex.** *J Neurosci* 2010, **30**:11640-11653.
33. Meyers EM, Freedman DJ, Kreiman G, Miller EK, Poggio T: **Dynamic population coding of category information in inferior temporal and prefrontal cortex.** *J Neurophysiol* 2008, **100**:1407-1419.
34. Vogel EK, Machizawa MG: **Neural activity predicts individual differences in visual working memory capacity.** *Nature* 2004, **428**:748-751.
35. Maxcey AM, Woodman GF: **Can we throw information out of visual working memory and does this leave informational residue in long-term memory?** *Front Psychol* 2014, **5** <http://dx.doi.org/10.3389/fpsyg.2014.00294>.
36. Emrich SM, Al-Aidroos N, Pratt J, Ferber S: **Visual search elicits the electrophysiological marker of visual working memory.** *PLoS One* 2009, **4**:e8042.
37. Emrich SM, Al-Aidroos N, Pratt J, Ferber S: **Finding memory in search: the effect of visual working memory load on visual search.** *Quarterly J Exp Psychol* 2010, **63**:1457-1466.
38. Carlisle NB, Arita JT, Pardo D, Woodman GF: **Attentional templates in visual working memory.** *J Neurosci* 2011, **31**:9315-9322.
39. Drew T, Vogel EK: **Neural measures of individual differences in selecting and tracking multiple moving objects.** *J Neurosci* 2008, **28**:4183-4191.
40. Tsubomi H, Fukuda K, Watanabe K, Vogel EK: **Neural limits to representing objects still within view.** *J Neurosci* 2013, **33**:8257-8263.
41. Kundu B, Sutterer DW, Emrich SM, Postle BR: **Strengthened effective connectivity underlies transfer of working memory training to tests of short-term memory and attention.** *J Neurosci* 2013, **33**:8705-8715.  
Intensive working memory training produced behavioral transfer to STM and visual search, and seemingly opposing trends in two measures derived from the EEG: strengthened task-specific effective connectivity in parietooccipital and frontoparietal circuits, but diminished CDA during STM and visual search.
42. Mazaheri A, Jensen O: **Asymmetric amplitude modulations of brain oscillations generate slow evoked responses.** *J Neurosci* 2008, **28**:7781-7787.
43. van Dijk H, van der Werf J, Mazaheri A, Medendorp WP, Jensen O: **Modulations of oscillatory activity with amplitude asymmetry can produce cognitively relevant event-related responses.** *Proc Natl Acad Sci USA* 2010, **107**:900-905.
44. Anderson DE, Serences JT, Vogel EK, Awh E: **Induced alpha rhythms track the content and quality of visual working memory representations with high temporal precision.** *J Neurosci* 2014, **34**:7587-7599.  
This application of multivariate encoding models to EEG data provides strong, specific evidence that the short-term retention of visual information is supported by changes in the physiological state of circuits that were active before stimulus presentation, and that contribute to the perception of this information, as well as to its STM.
45. Roux F, Uhlhaas PJ: **Working memory and neural oscillations: alpha-gamma versus theta-gamma codes for distinct WM information?** *Trends Cogn Sci* 2014, **18**:16-25.  
Comprehensive review of recent research on oscillatory dynamics associated with STM and working memory-task performance.
46. Fuentemilla L, Penny WD, Cashdollar N, Bunzeck N, Düzel E: **Theta-coupled periodic replay in working memory.** *Curr Biol* 2010, **20**:606-612.
47. Lewis-Peacock JA, Drysdale A, Oberauer K, Postle BR: **Neural evidence for a distinction between short-term memory and the focus of attention.** *J Cogn Neurosci* 2012, **23**:61-79.  
First report, with MVPA, of a failure to find evidence for the active neural representation of information that is in STM, but presumably outside the focus of attention.
48. LaRocque JJ, Lewis-Peacock JA, Drysdale A, Oberauer K, Postle BR: **Decoding attended information in short-term memory: an EEG study.** *J Cogn Neurosci* 2013, **25**:127-142.
49. Barak O, Tsodyks M: **Working models of working memory.** *Curr Opin Neurobiol* 2014, **25**:20-24.  
Review that emphasizes the ubiquity of short-term synaptic plasticity in neural communication, and computational models that incorporate this plasticity in simulations of STM.
50. Sugase-Miyamoto Y, Liu Z, Wiener MC, Optican LM, Richmond BJ: **Short-term memory trace in rapidly adapting synapses of inferior temporal cortex.** *PLoS Comput Biol* 2008, **4**:e1000073.
51. Cowan N: *Attention Memory: An Integrated Framework.* New York: Oxford University Press; 1995, .
52. Oberauer K: **Binding and inhibition in working memory: individual and age differences in short-term recognition.** *J Exp Psychol: General* 2005, **134**:368-387.
53. Hollingworth A, Hwang S: **The relationship between visual working memory and attention: retention of precise colour information in the absence of effects on perceptual selection.** *Philos Trans R Soc B* 2013, **368**:20130061.
54. Olivers CNL, Peters J, Houtkamp R, Roelfsema PR: **Different states in visual working memory: when it guides attention and when it does not.** *Trends Cogn Sci* 2011, **15**:327-334.
55. Reinhart RM, Heitz RP, Purcell BA, Weigand PK, Schall JD, Woodman GF: **Homologous mechanisms of visuospatial working memory maintenance in macaque and human: properties and sources.** *J Neurosci* 2012, **32**:7711-7722.