



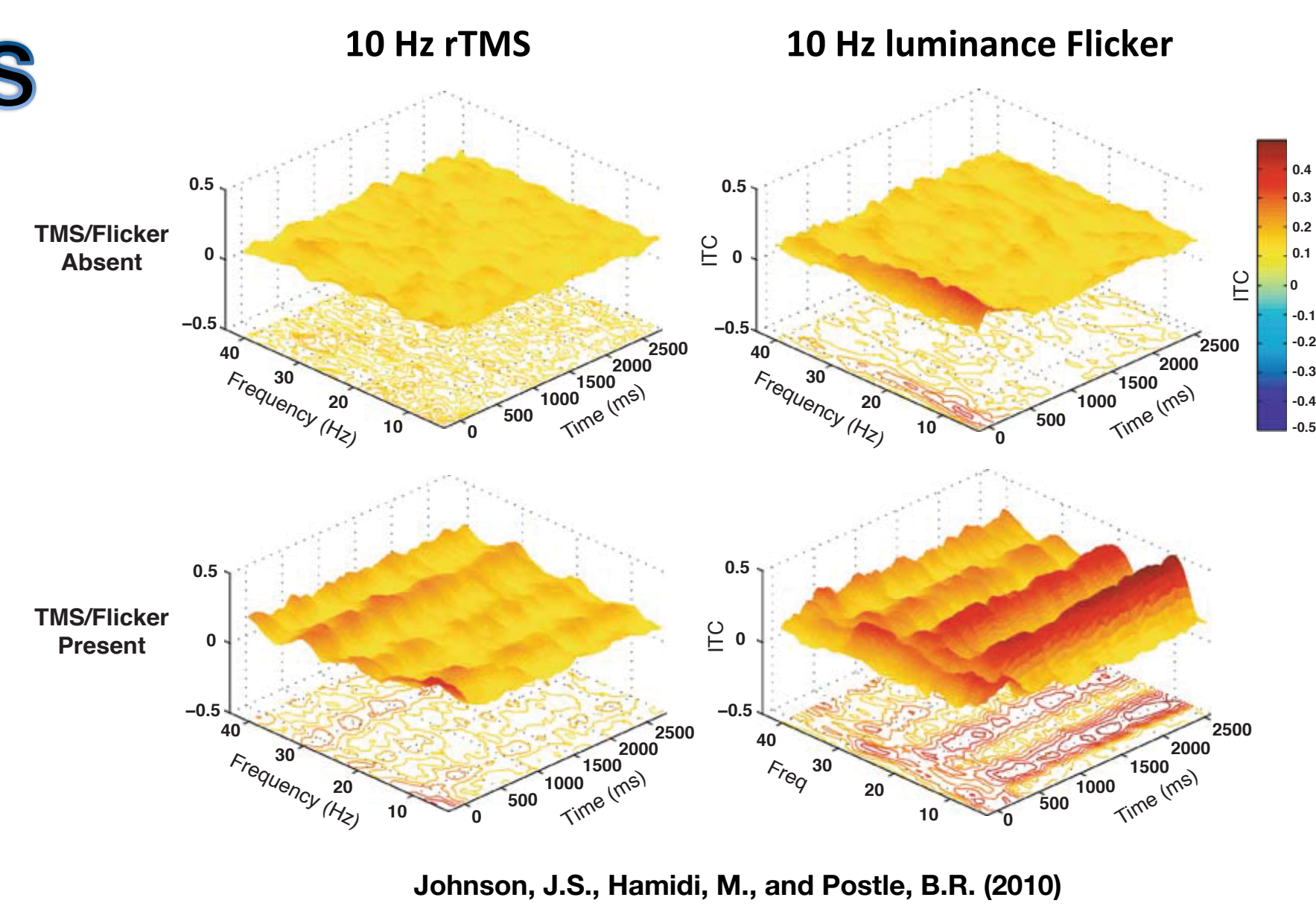
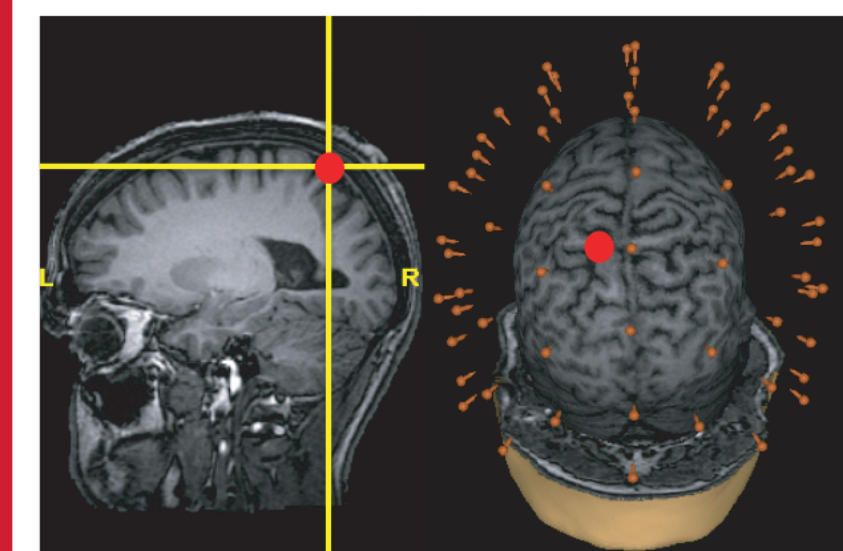
# rTMS/EEG of MT+ During STM for Transparent Motion

Andrew D. Sheldon<sup>3,4</sup>, Jason Samaha<sup>1</sup>, Nathan S. Rose<sup>2</sup>, Adam C. Riggall<sup>2</sup>, X. Huang<sup>3</sup>, Bradley R. Postle<sup>1,2</sup>  
Departments of <sup>1</sup>Psychology and <sup>2</sup>Psychiatry, <sup>3</sup>Neuroscience Training Program, <sup>4</sup>Medical Science Training Program, University of Wisconsin-Madison



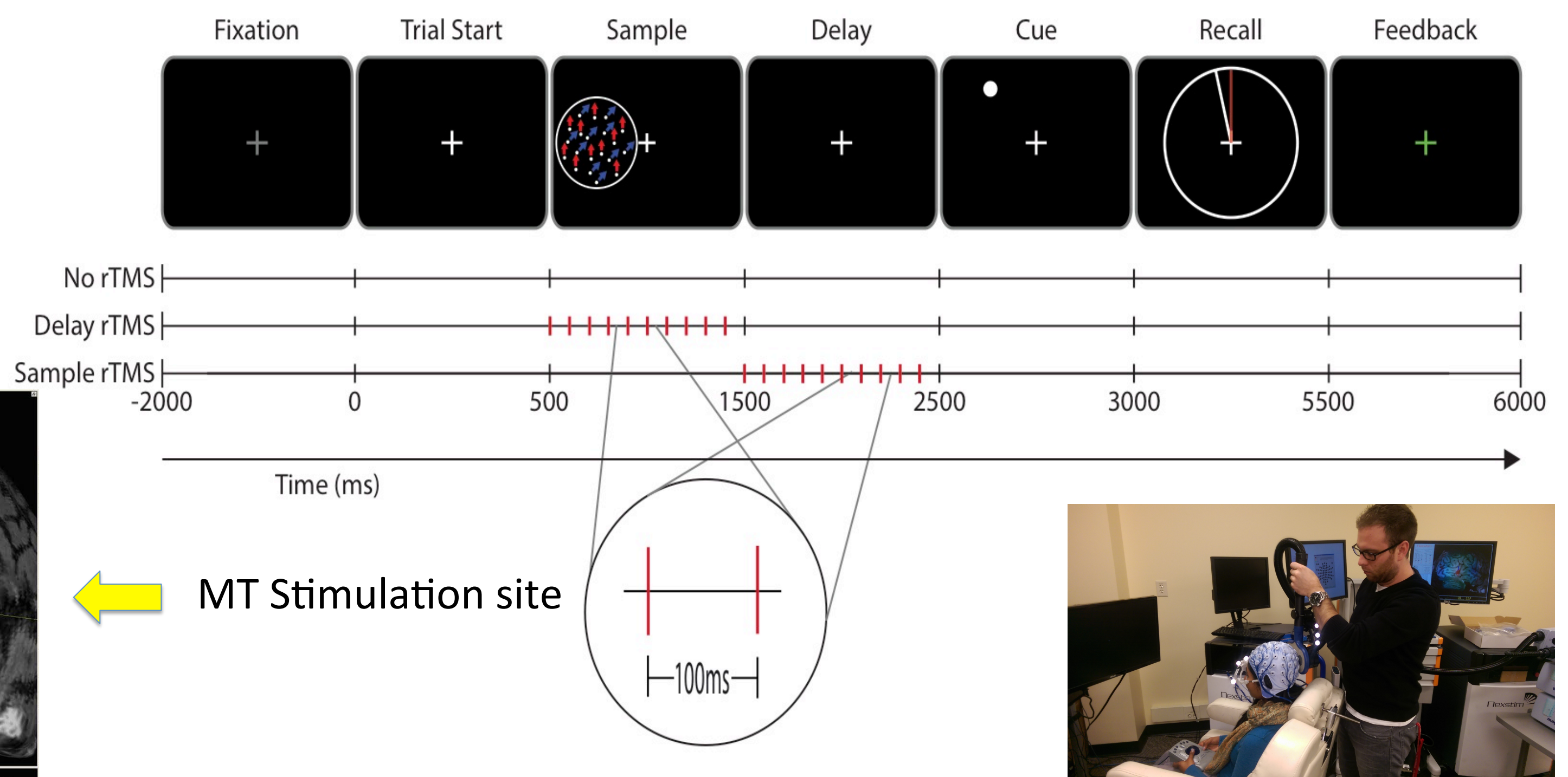
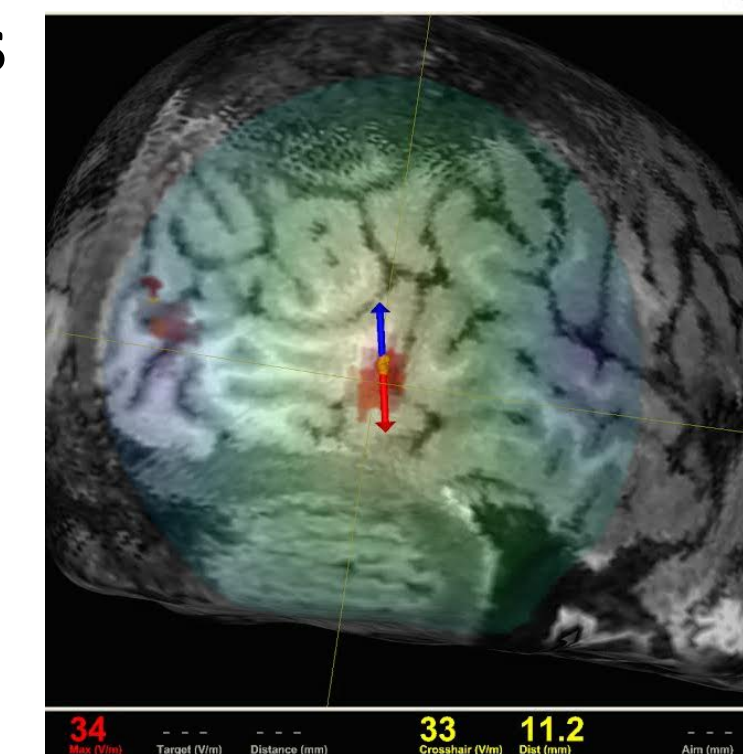
## Introduction

### How Does rTMS Alter Neural Activity?

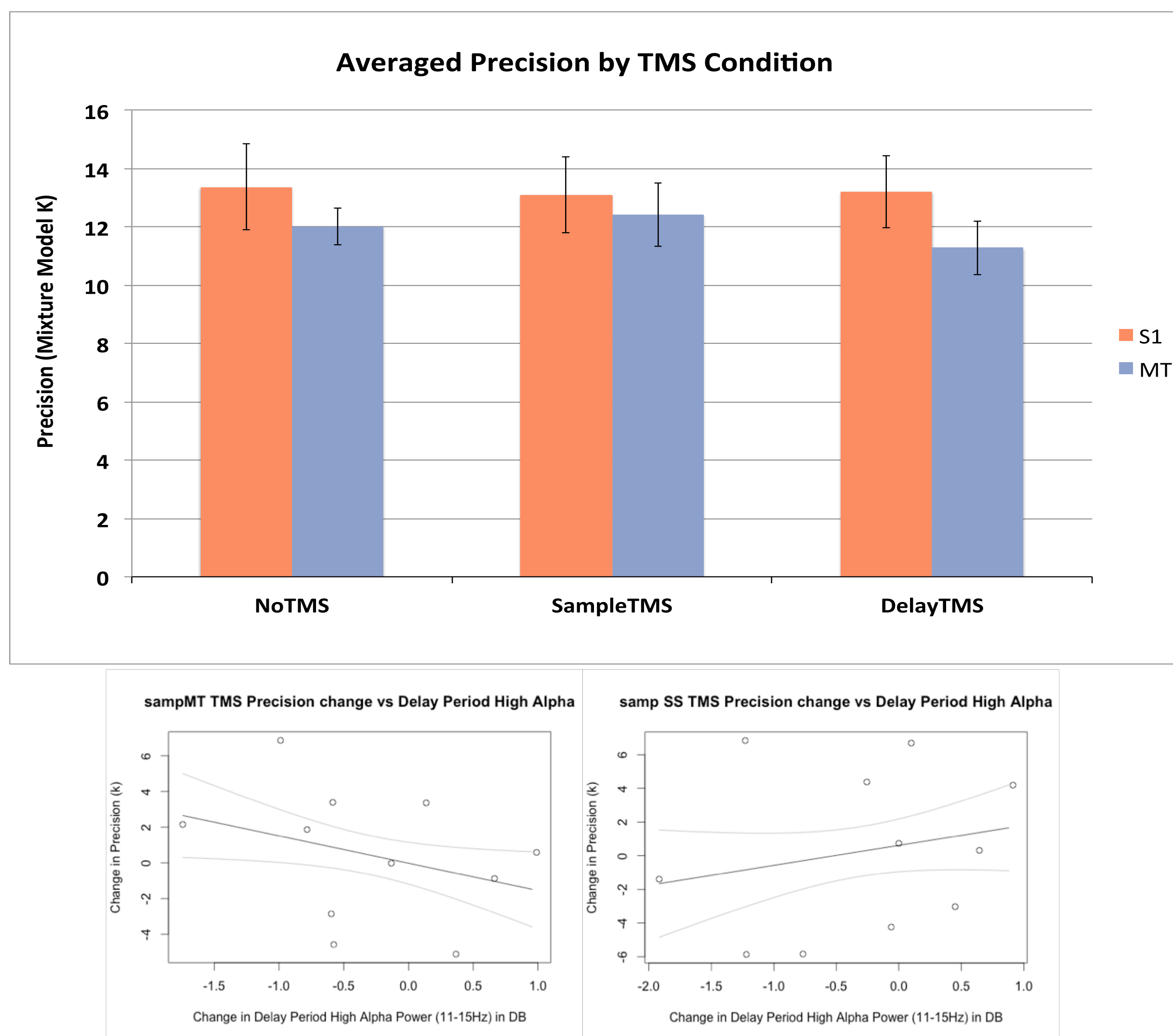


## Methods

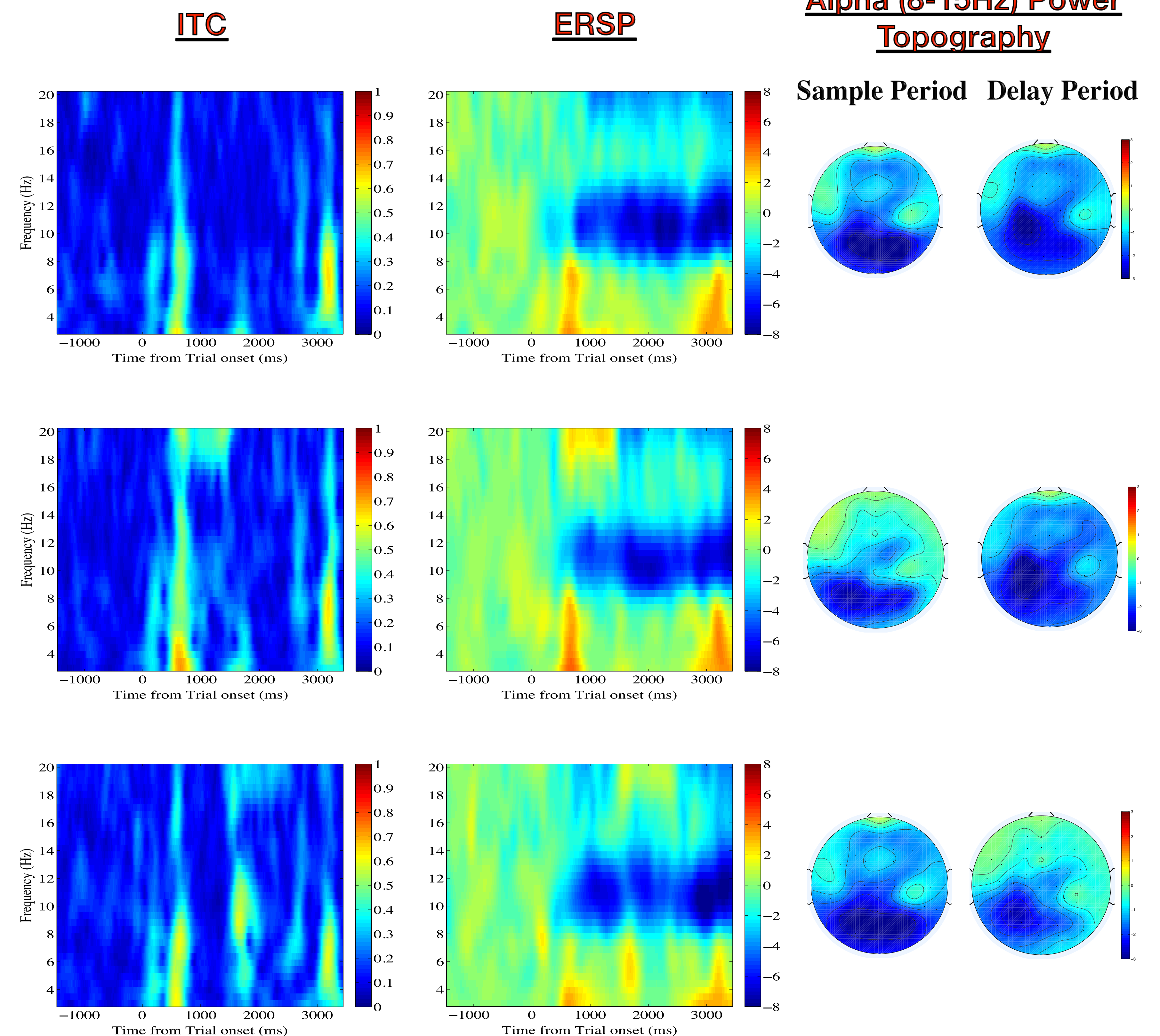
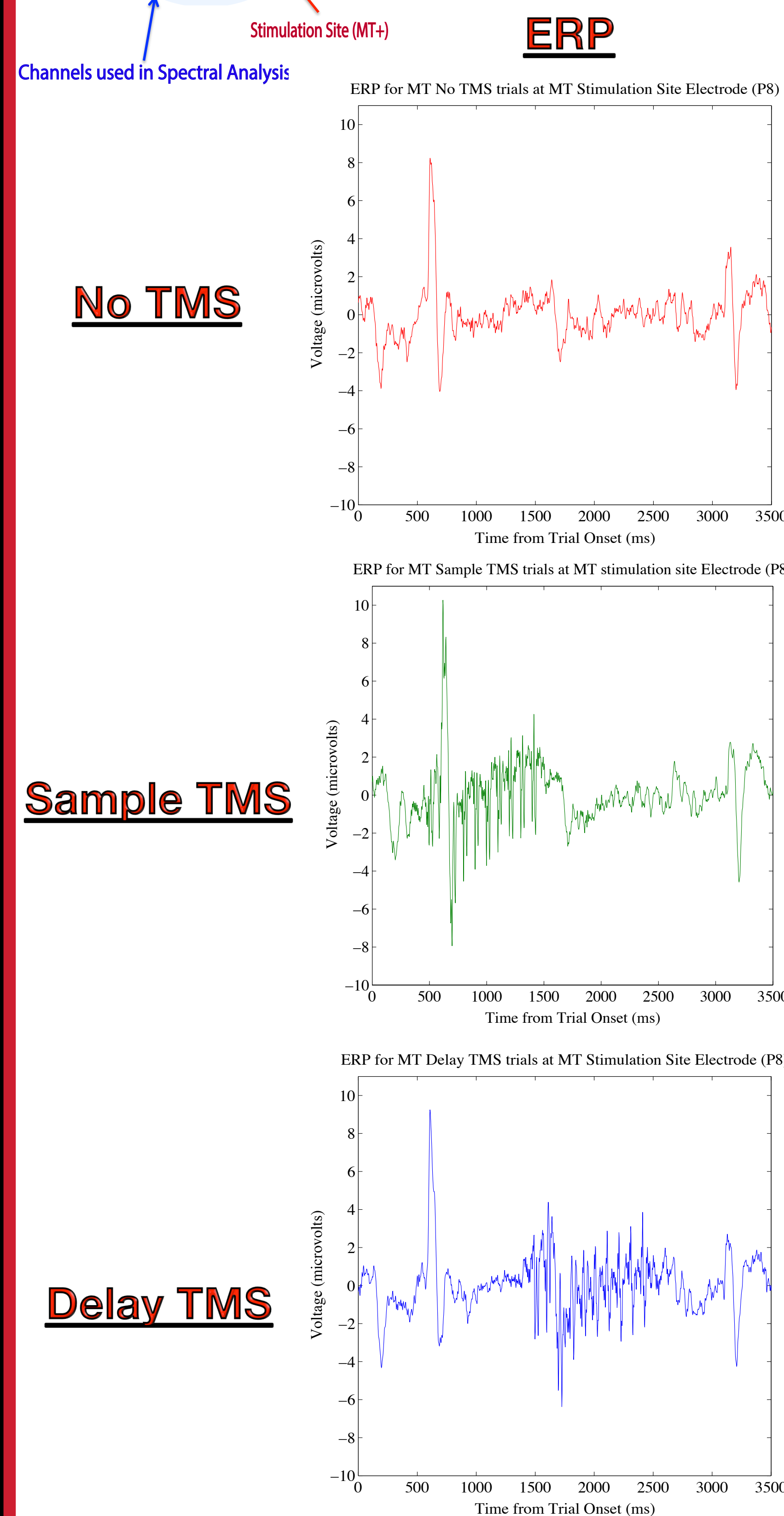
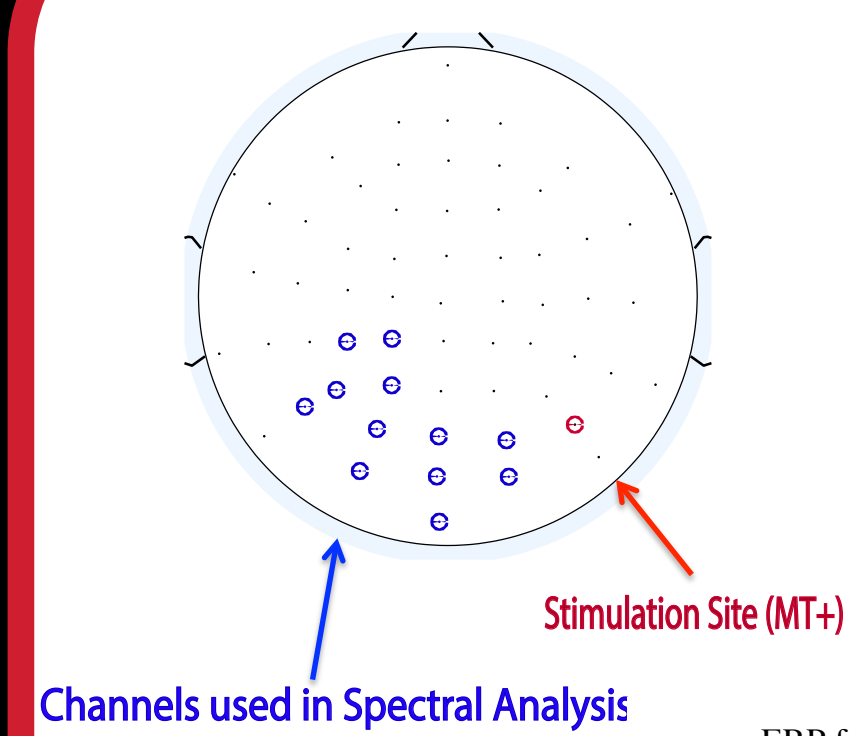
- We used a transparent motion working memory task with a continuous measure of recall
- We then applied rTMS to MT+ (defined by fMRI localizer task) or a control site (S1) during either the task delay period or sample presentation while recording simultaneous EEG.
- We utilized ICA as well as a median filter as methods of TMS artifact reduction



## Behavior Results (N=11)



## EEG Results: ERPs and Spectral Data



## Conclusions

- Task-concurrent rTMS effects are subtle, and are better thought of as akin to biasing endogenous activity rather than imposing an exogenous rhythm
- Preliminary trends suggest opposing effects of rTMS to MT+ vs. S1 on individual differences in behavior

References  
- Johnson, J.S., Hamidi, M., and Postle, B.R. (2010) *Using EEG to explore how rTMS produces its effects on behavior.* Brain Topography, 22, 281-293