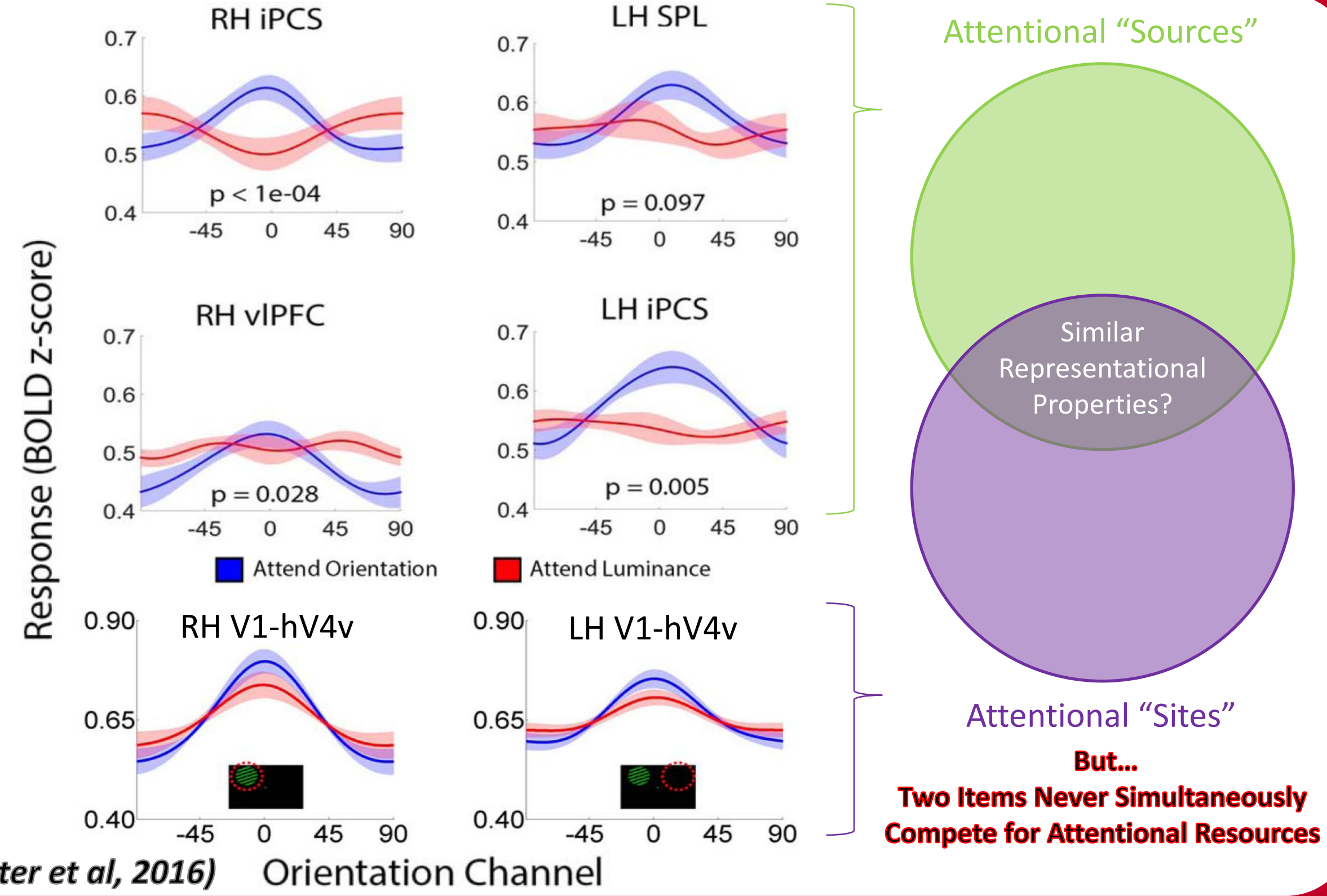
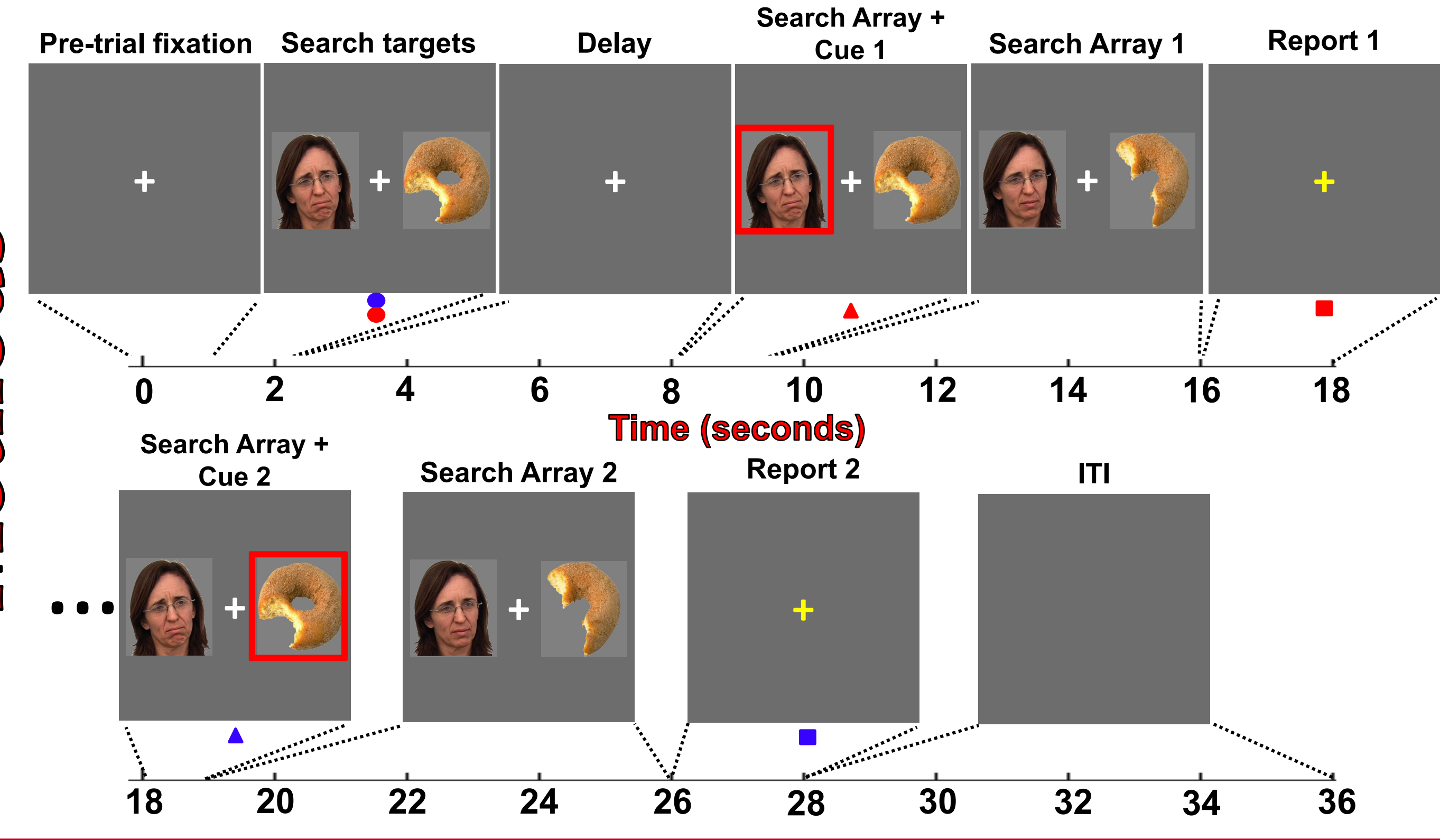


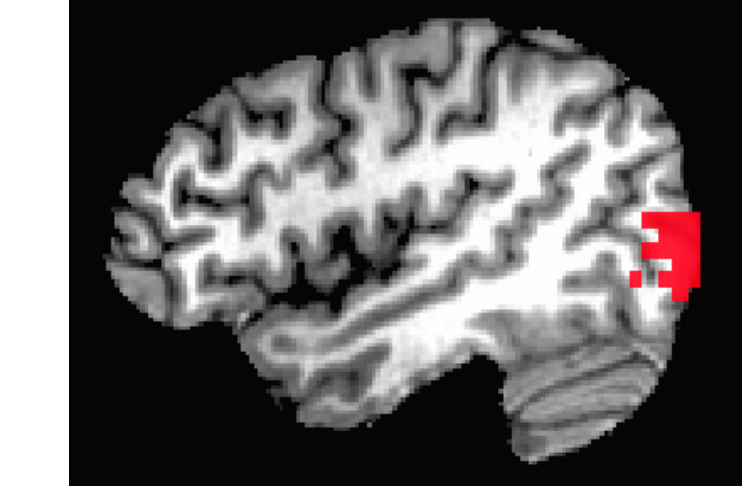
## Introduction



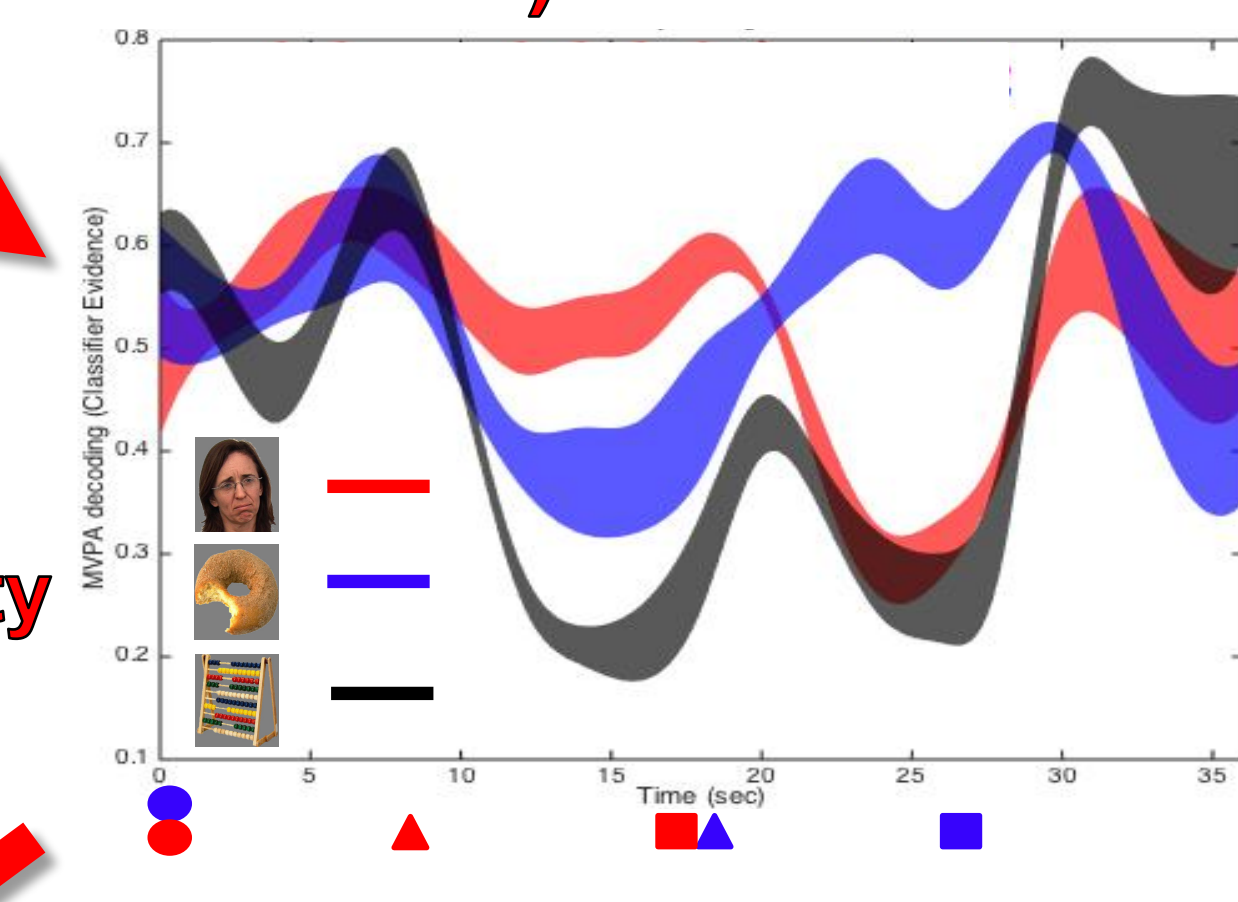
## Methods



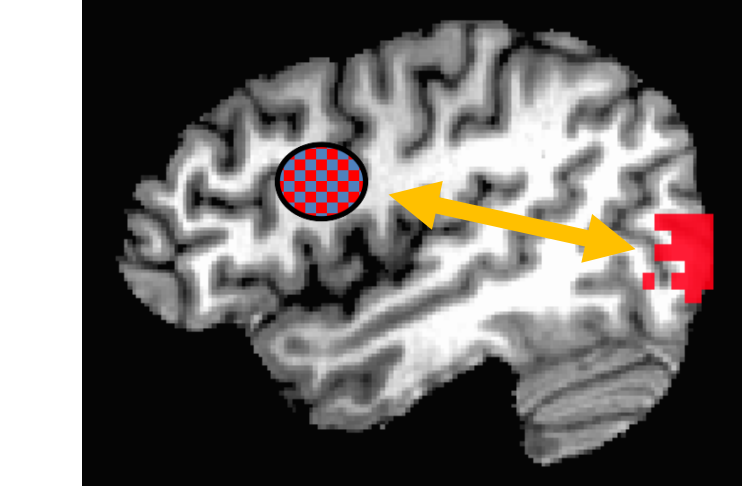
### 1) Define ROIs (Searchlight)



### 2) MVPA



### 3) Informational Connectivity (Searchlight)

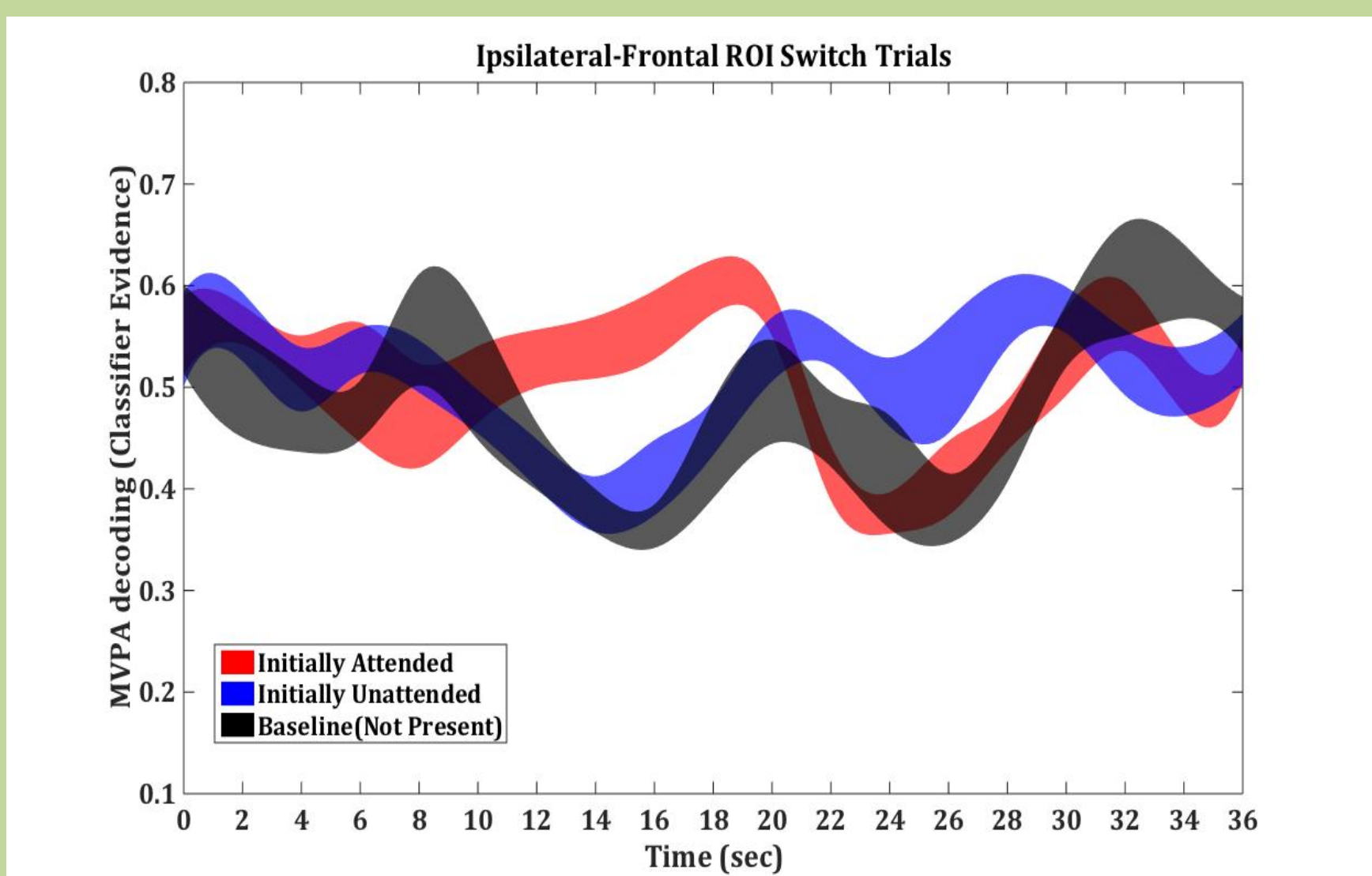
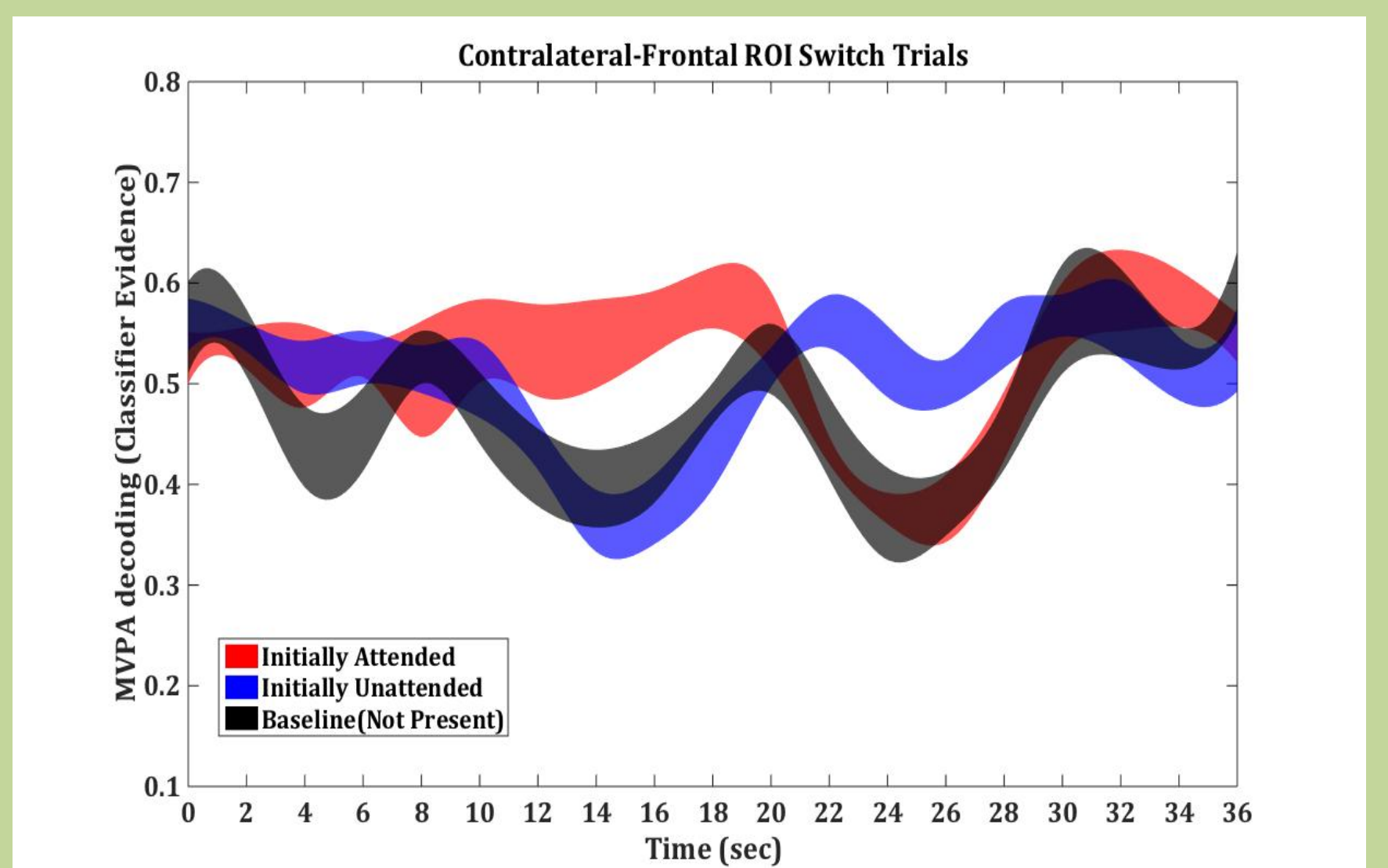
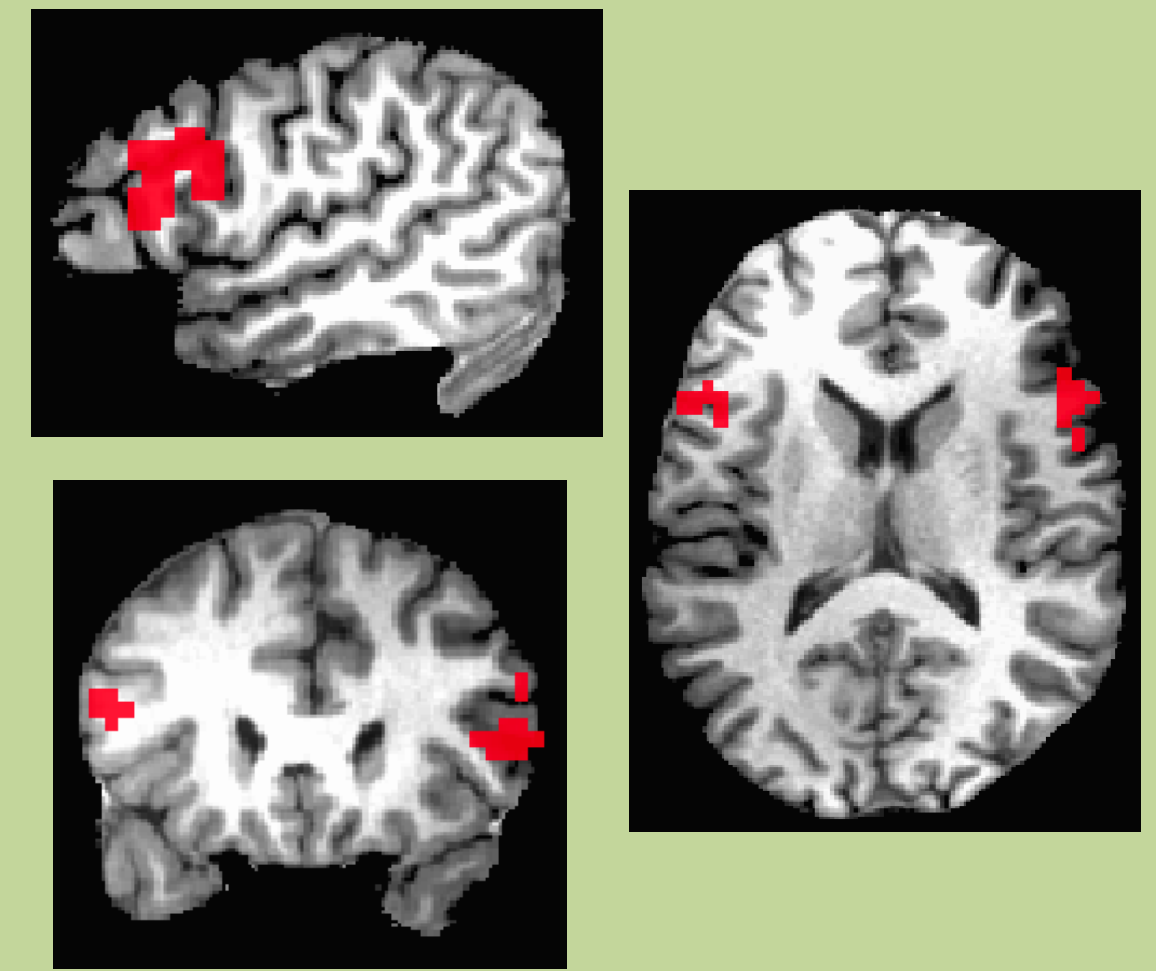


(Coutanche and Thompson-Schill, 2013)

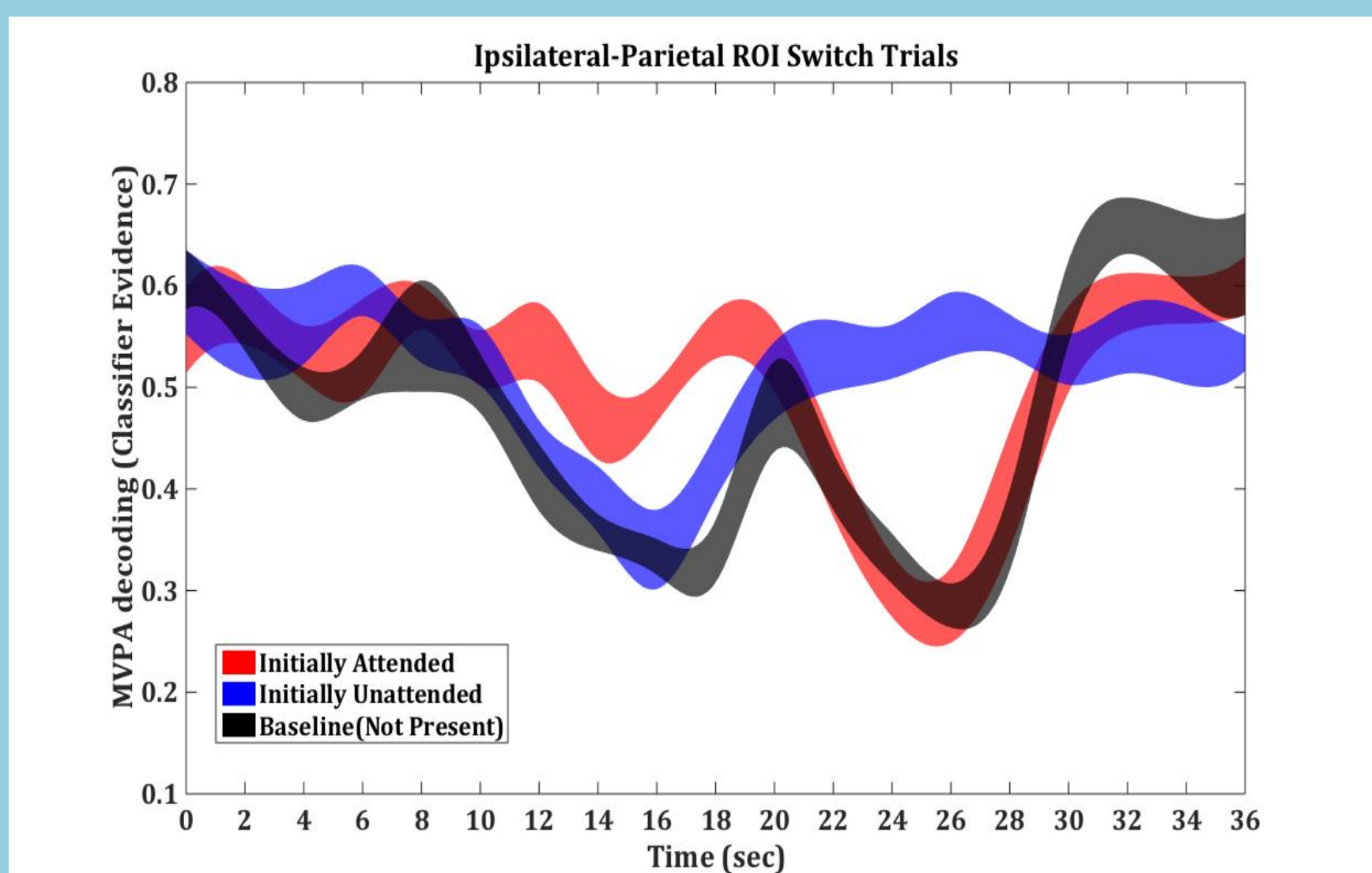
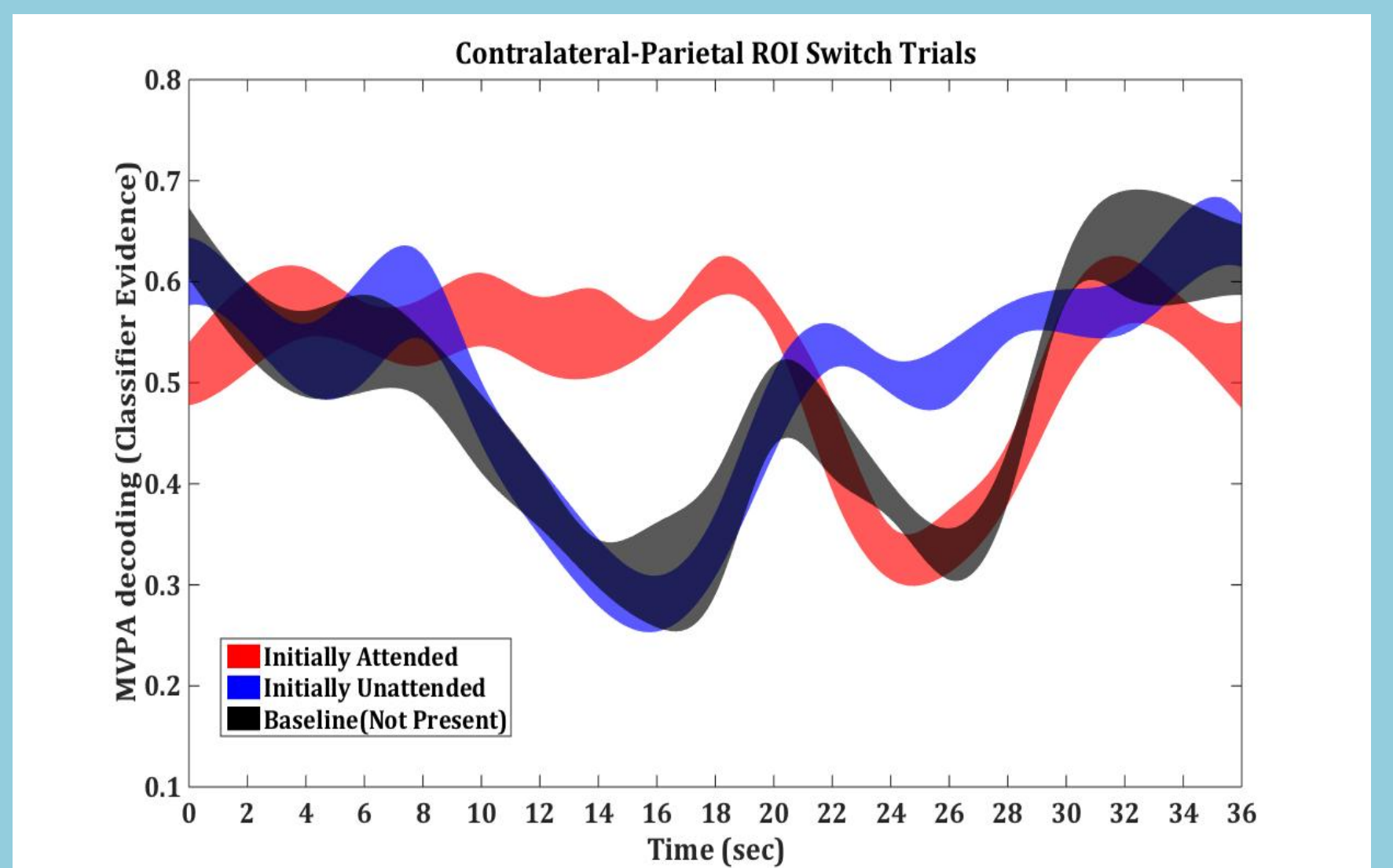
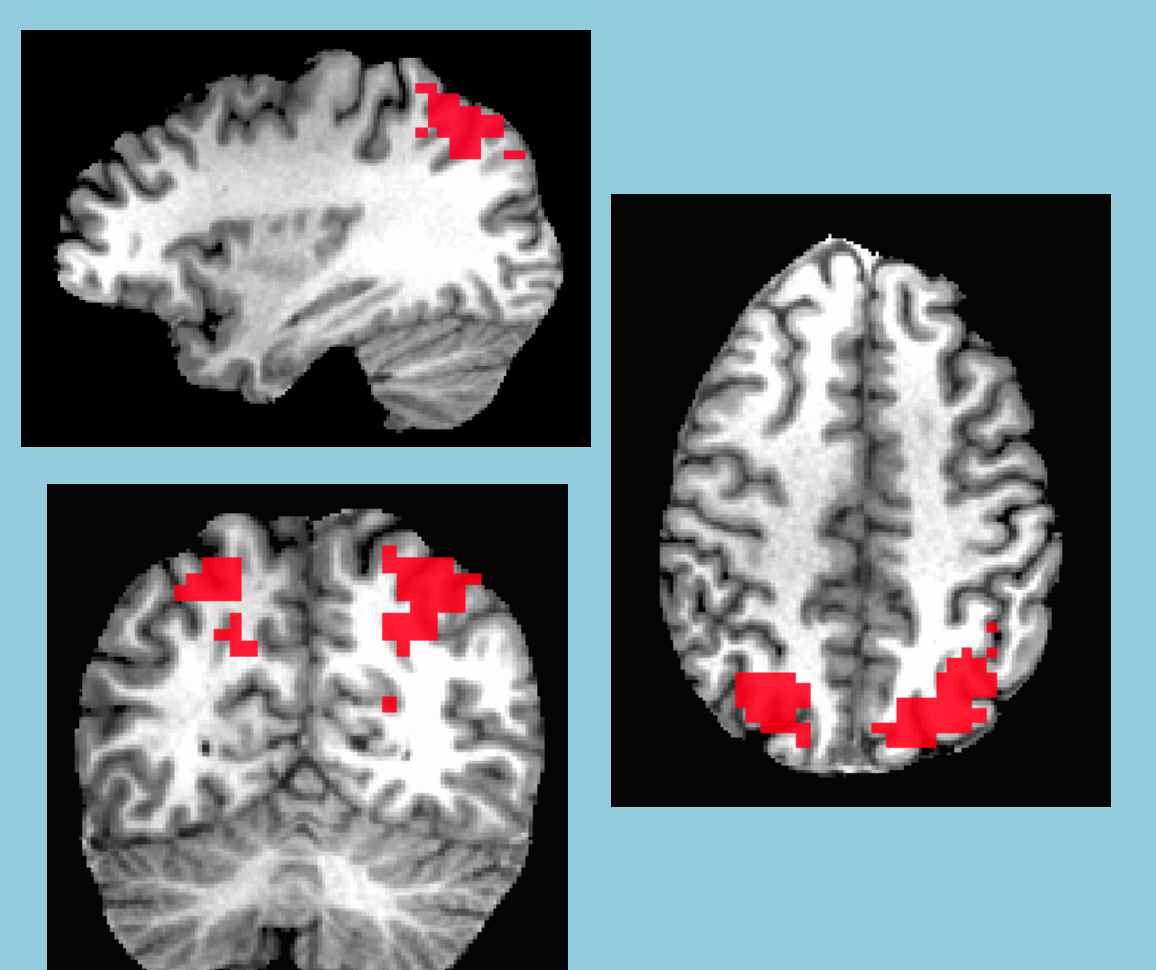
## ROIs (Searchlight Defined)

## MVPA Decoding Contralateral Ipsilateral

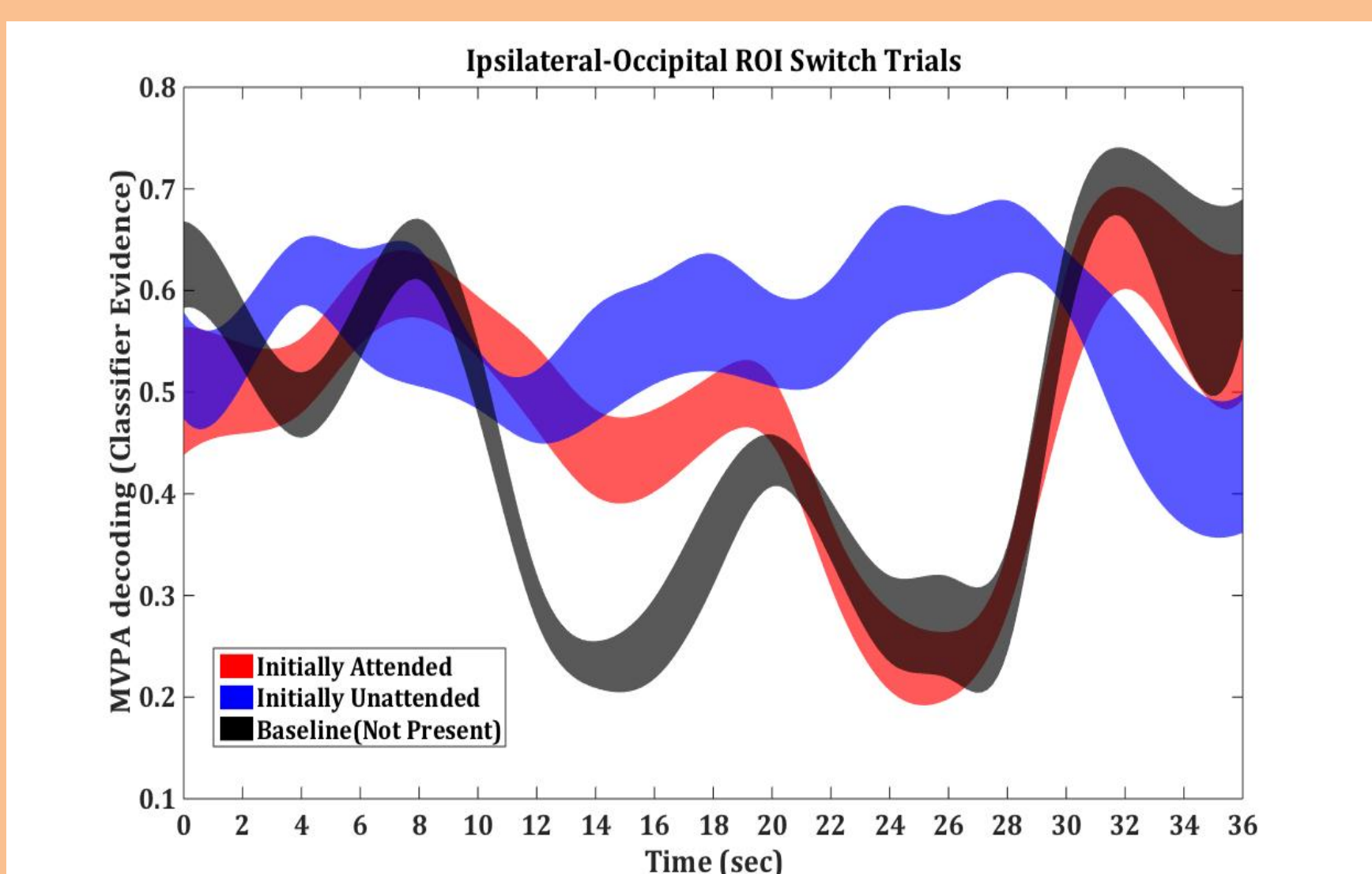
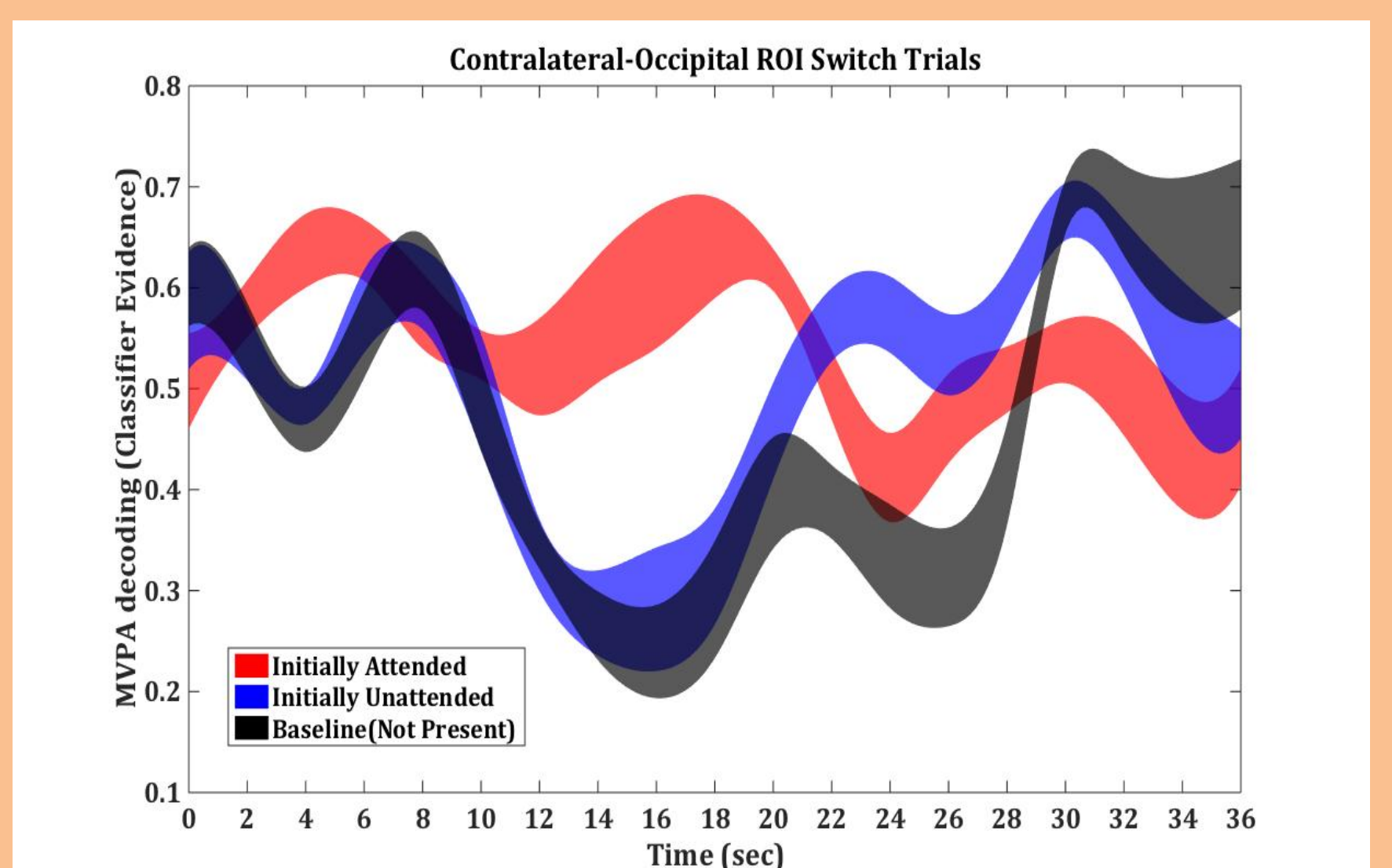
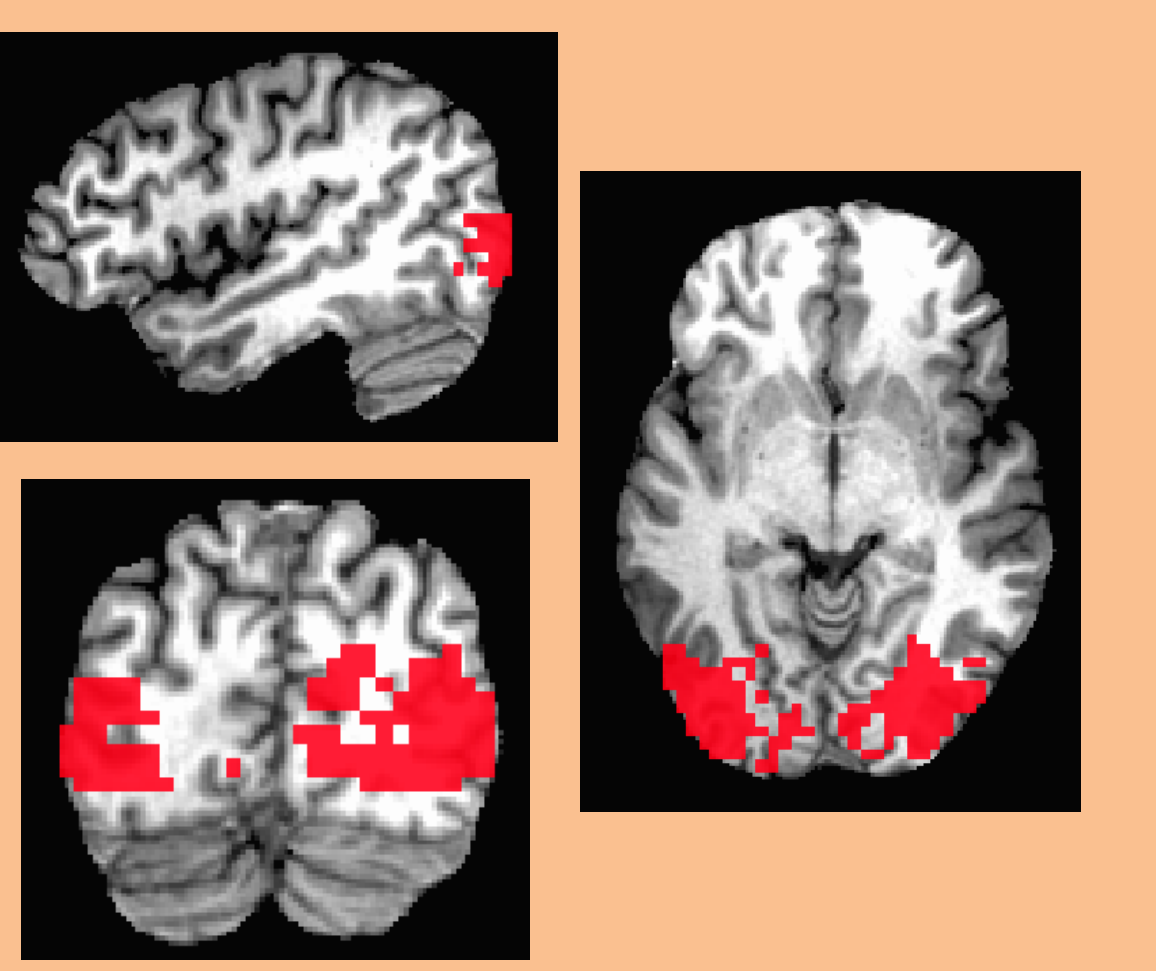
### Frontal



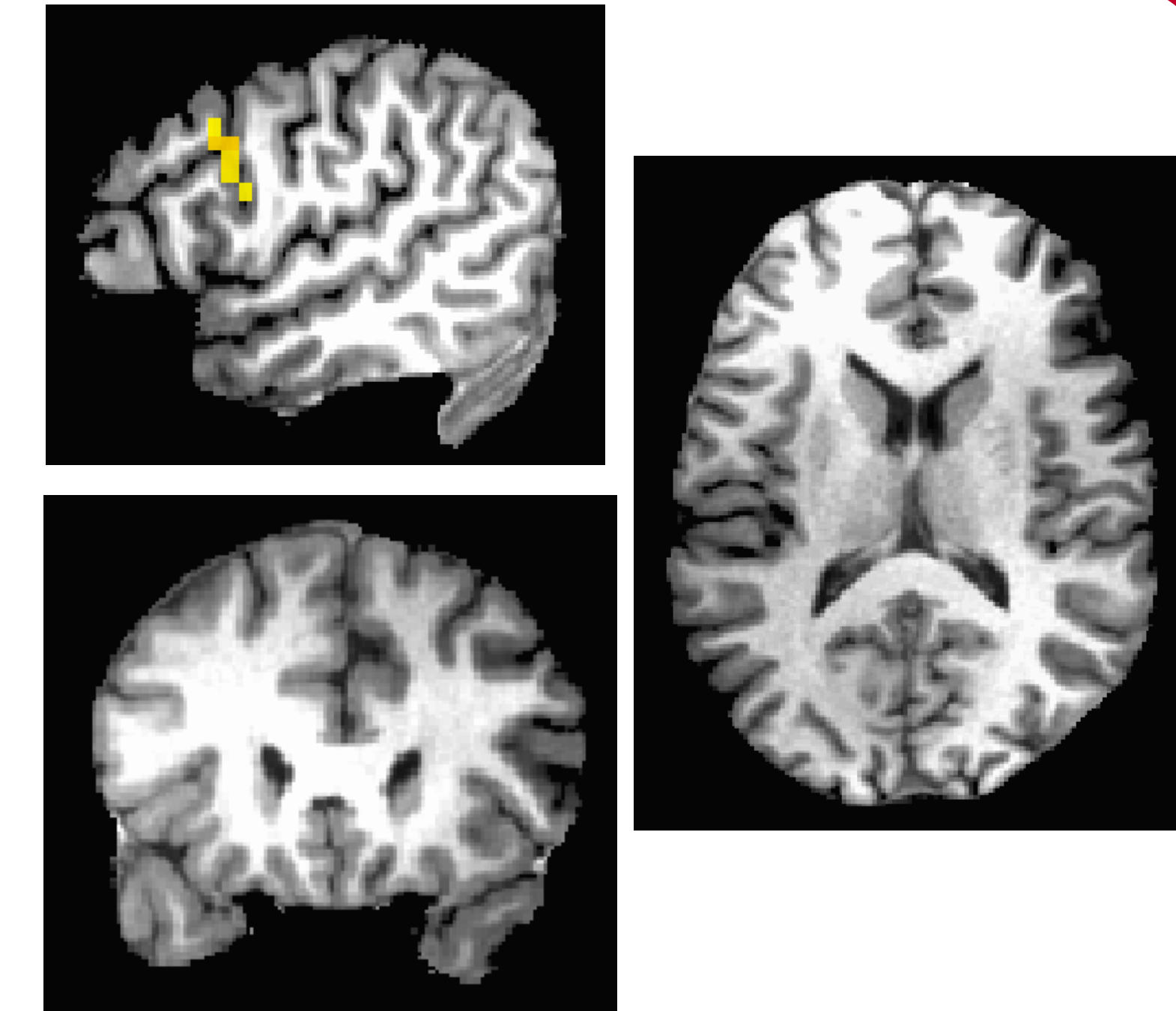
### Parietal



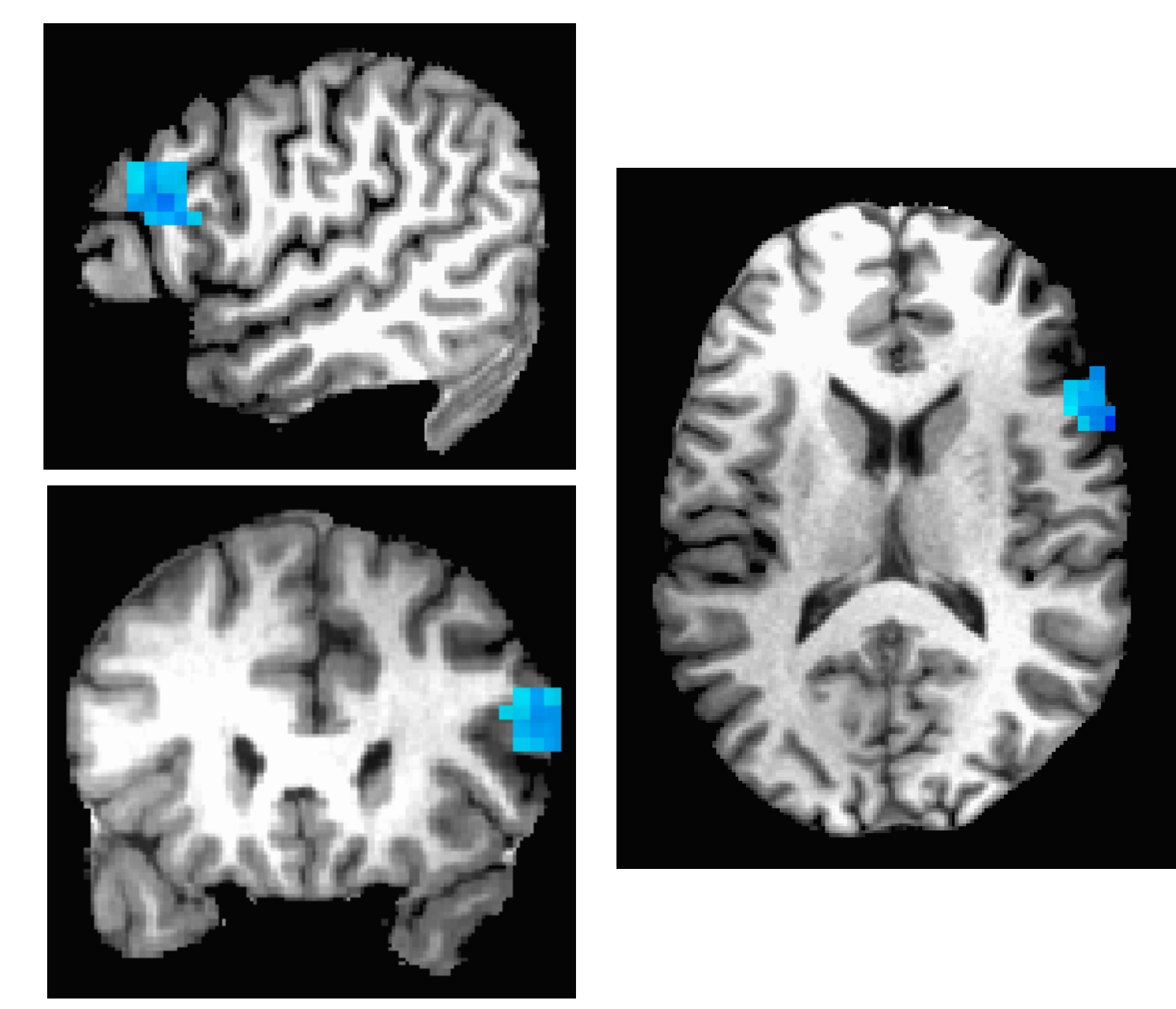
### Occipital



### Attended



### Unattended



## Informational Connectivity (Searchlight)

### Difference

